

Withdrawable circuit breaker in Germany





Overview

What is the difference between fixed switchgear and withdrawable circuit breaker?

As mentioned earlier, fixed switchgear has the disadvantage of being difficult to overhaul when the circuit breaker fails, leading to prolonged power outages. Therefore, withdrawable circuit breakers better meet customer requirements. Is the center-mounted, horizontal draw-out structure the only type available?

.

Should you choose a fixed or withdrawable circuit breaker?

One of the critical decisions when designing or upgrading switchgear is choosing between fixed and withdrawable circuit breakers. Each type has its advantages and is suited for different applications. The choice depends on various factors, including reliability, maintenance requirements, operational flexibility, and cost.

What is a withdrawable circuit breaker?

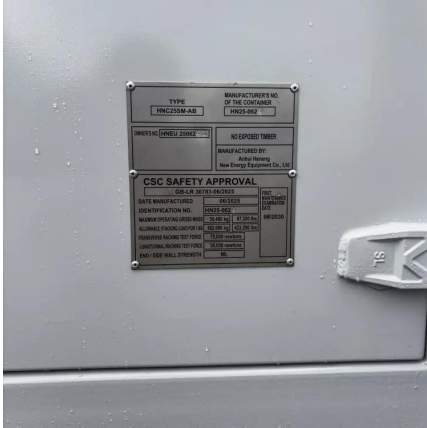
Applications that require frequent switching, testing, or reconfiguration of circuits benefit from withdrawable circuit breakers. They enable quick removal and replacement without shutting down the entire switchgear, making them ideal for industrial plants, power stations, and mission-critical facilities.

Why are circuit breakers important?

Circuit breakers play a vital role in electrical switchgear systems, ensuring the protection and control of electrical networks. One of the critical decisions when designing or upgrading switchgear is choosing between fixed and withdrawable circuit breakers. Each type has its advantages and is suited for different applications.



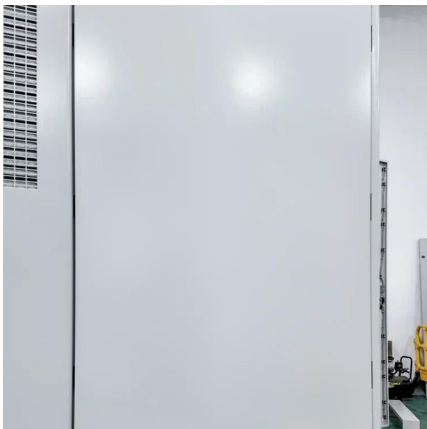
Withdrawable circuit breaker in Germany



Withdrawable Circuit Breaker, Frame size I, 3 pole and 4 pole ...

Entry type: Manual, Entry ID: 33272206, Entry date: 12/21/2020 Manual - 3WT Circuit Breakers Withdrawable Circuit Breaker, Frame size I, 3 pole and 4 pole The broken ...

[Free Quote](#)



[NXAirS Withdrawable Medium-Voltage Circuit-Breaker ...](#)

The installed circuit-breaker, 3AE-SION passed the environmental test like vibration, high temperature, low temperature etc and related type test, and gained the type ...

[Fixed and Withdrawn Circuit Breakers](#)

The withdrawable circuit breaker switchgear needs to be equipped with a separate grounding switch, which is generally on the outlet side, and it is difficult to install on the busbar ...

[Free Quote](#)



[Withdrawable Indoor Circuit Breaker EDI 36](#)

The EDI SK is an indoor live tank SF 6 Autopuffer TM circuit breaker. It has a proven design and 30 years of experience, and 1500 installations globally. The breaker offers a unique fully factory fitted and ...

[Free Quote](#)



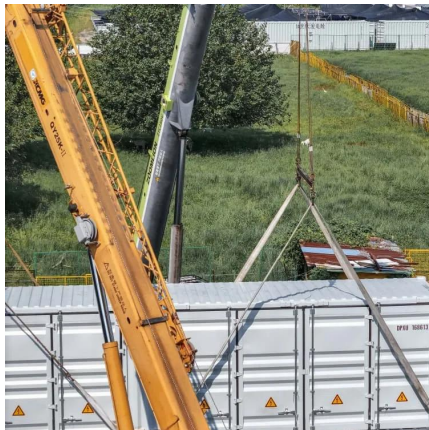
[Free Quote](#)



[Withdrawable Indoor Circuit Breaker EDI 36 -72.5 kV](#)

The EDI SK is an indoor live tank SF 6 Autopuffer TM circuit breaker. It has a proven design and 30 years of experience, and 1500 installations globally. The breaker offers a ...

[Free Quote](#)



Switchgear Circuit Breakers: When to Use Fixed vs. Withdrawable ...

Circuit breakers play a vital role in electrical switchgear systems, ensuring the protection and control of electrical networks. One of the critical decisions when designing or ...

[Free Quote](#)



[Withdrawable Circuit Breakers](#)

Translations in context of "Withdrawable Circuit Breakers" in English-German from Reverso Context: For our switchgear we manufacture input, coupling and output bays with ...

[Free Quote](#)

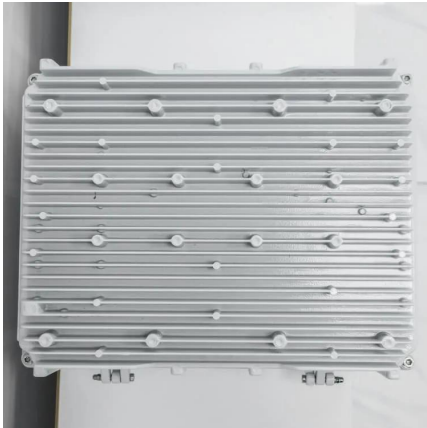




Withdrawable Circuit Breaker

Introduction In addition to the advantages provided by a plug-in base, installation of the circuit breaker on a chassis facilitates handling. Withdrawable chassis circuit breakers offer three ...

[Free Quote](#)



Switchgear Circuit Breakers: When to Use ...

Circuit breakers play a vital role in electrical switchgear systems, ensuring the protection and control of electrical networks. One of the critical decisions when designing or upgrading switchgear is choosing ...

[Free Quote](#)

Vacuum circuit-breaker on withdrawable part - high duty

The circuit-breaker can only be closed when the withdrawable part is precisely in the defined test position or service position (mechanical inter lock, with additional electrical ...

[Free Quote](#)



About the switchgear in several different circuit breaker forms

In switchgear applications, the withdrawable structure of circuit breakers can be divided into three main types, as detailed below: As mentioned earlier, fixed switchgear has ...

[Free Quote](#)



[About the switchgear in several different ...](#)

In switchgear applications, the withdrawable structure of circuit breakers can be divided into three main types, as detailed below: As mentioned earlier, fixed switchgear has the disadvantage of being difficult ...

[Free Quote](#)



Contact Us

For catalog requests, pricing, or partnerships, please visit:
<https://getonco.co.za>

Scan QR Code for More Information



<https://getonco.co.za>