

Wind turbine constant speed system





Overview

How does a constant speed wind turbine work?

A constant speed wind turbine operates at the maximum power point according to the wind conditions to control the active and reactive power of the machine. This is achieved through power electronics for machine control. The turbine may include a synchronous or induction generator.

How is a wind turbine controlled?

The conventional control of a wind turbine involves regulating the power yield and rotor speed. In above-rated wind conditions, the generator power should be as close as possible to the rated value. In below-rated wind speeds, the rotor speed should 'track' the wind speed to gain maximum energy yield.

How does a variable speed wind turbine operate?

In a variable speed wind turbine, the rotor speed increases with wind speed up to a certain limit. This allows for quieter operation at low wind speeds compared to a constant speed wind turbine.

How do wind turbines control rotary speed and grid frequency?

In constant speed wind turbines, the control system decouples the rotary speed and grid frequency. This means that the wind turbines cannot provide corresponding active power when grid frequency varies, reducing the inertia of the whole power grid.



Wind turbine constant speed system



Control strategy of the novel stator free speed regulating wind turbine

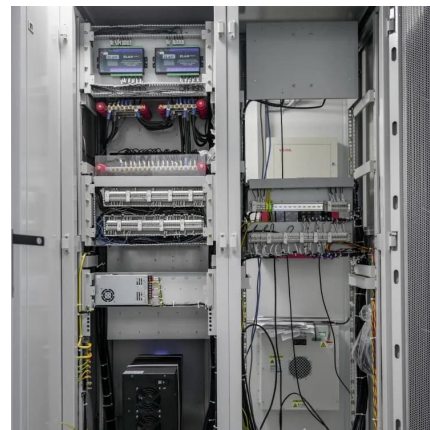
Building a high-proportion renewable energy power system is a key measure to address the challenges of the energy revolution and climate change. However, current high ...

[Free Quote](#)

[Rotor Speed Stability Analysis of a Constant Speed Wind ...](#)

Rotor Speed Stability Analysis of Constant Speed Wind Turbine Generators, Proceedings of IEEE conference on Power Electronics Drives and Energy Systems, ISBN: ...

[Free Quote](#)



[Behaviour of Constant Speed Wind Power System Under](#)

The mathematical modelling of the constant-speed wind turbine system connected to the grid has been presented in this paper and further has been examined under the variable ...

[Free Quote](#)



Research on Idle Load Grid-Connected Control Strategy of Variable Speed

The doubly-fed wind turbine, recognized for its wide operational speed range, high energy utilization rate, soft grid connection, and adjustable power factor, represents a ...



[Free Quote](#)



[Optimal constant power control of wind turbine generators ...](#)

The difficulty of wind power generation lies in the randomness of natural wind energy, which leads to the instability of the output power of Wind Turbine Generators (WTGs). ...

[Free Quote](#)



[Variable speed and constant frequency ...](#)

A new control method is presented within this article, which keeps the motor speed constant to generate constant frequency electrical power when the rotational speed of the wind wheel changes.

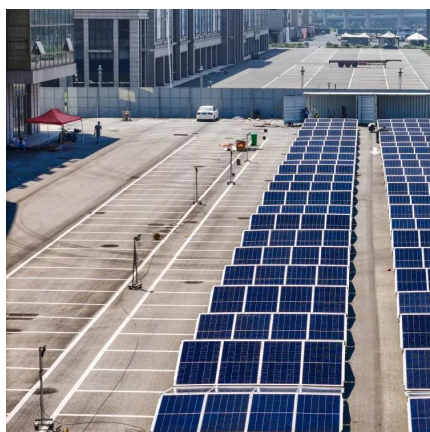
[Free Quote](#)



Influence of Constant Speed Wind Turbine Generator on Power System

Then, the influence of load increase and penetration of a constant speed wind turbine generator on power system oscillation is studied in detail. Finally, the effect of ...

[Free Quote](#)





[Control strategy of the novel stator free ...](#)

Building a high-proportion renewable energy power system is a key measure to address the challenges of the energy revolution and climate change. However, current high-proportion renewable energy systems ...

[Free Quote](#)



Variable speed and constant frequency control of hydraulic wind turbine

A new control method is presented within this article, which keeps the motor speed constant to generate constant frequency electrical power when the rotational speed of the ...

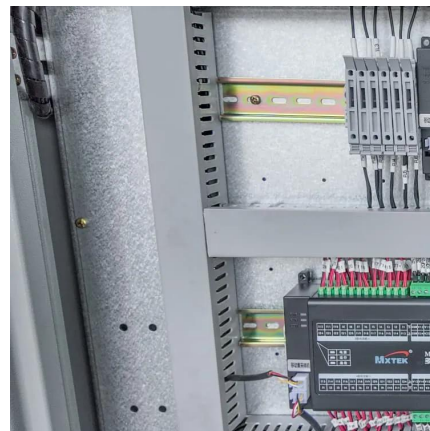
[Free Quote](#)



[Drive-train Characteristics of Constant Speed HAWT's: ...](#)

speed horizontal-axis wind turbine is due to a combination of the structural dynamics the drive-train and generator dynamics and, when appropriate, the control dynamics. A dynamically ...

[Free Quote](#)



[An Optimal Fast Frequency Control Method for Variable Speed Wind](#)

This research presents a proposal to enhance the system frequency by utilizing WFs and restoring the speed of the wind turbine (WT) rotor using the doubly fed induction ...

[Free Quote](#)





[Constant Speed Wind Turbine](#)

Constant speed wind turbines are defined as turbines that operate with a fixed angular speed of the rotor, regardless of the wind speed, typically using induction or synchronous generators. ...

[Free Quote](#)



Contact Us

For catalog requests, pricing, or partnerships, please visit:
<https://getonco.co.za>

Scan QR Code for More Information



<https://getonco.co.za>