

# **Two solar container lithium battery packs directly connected in parallel**





## Overview

---

Can you connect two lithium batteries in parallel?

Yes, you can connect two lithium batteries in parallel to increase capacity while maintaining voltage. Ensure both batteries have identical voltage, capacity, and state of charge to prevent imbalances. Use proper wiring, fuses, and a battery management system (BMS) to mitigate risks like overheating or uneven current flow.

How many lithium batteries can enerdrive run in parallel?

Most lithium batteries on the market will have an inbuilt battery management system which will prevent over discharge. Enerdrive supports running its B-TEC batteries lithium batteries in parallel. It recommends a maximum battery bank size of four lithium batteries of equal voltage and amperage.

How do you connect two lithium ion batteries together?

Connect the positive terminals of both packs together. Connect the negative terminals of both packs together. Ensure protective measures like fuses to limit current. For example, two 12V 10Ah Li-ion packs connected in parallel produce a 12V 20Ah battery bank, doubling total energy storage while keeping supply voltage equal to an individual pack.

Why should you connect a lithium battery pack in series or parallel?

Connecting together well-matched lithium battery packs in series or parallel allows increasing capacity or voltage compared to using just a single pack. Pay special attention to safety. Following best practices during mechanical and electrical integration keeps your custom battery banks running optimally.



## Two solar container lithium battery packs directly connected in parallel

---



### [Can I parallel multiple Lithium Battery Packs?](#)

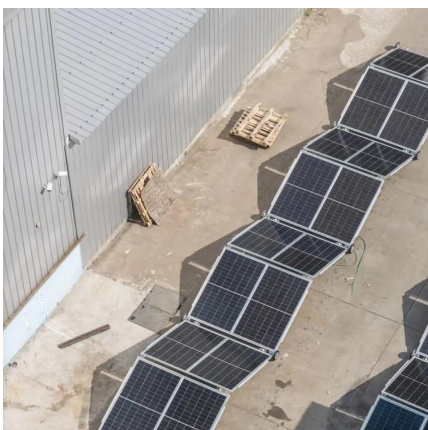
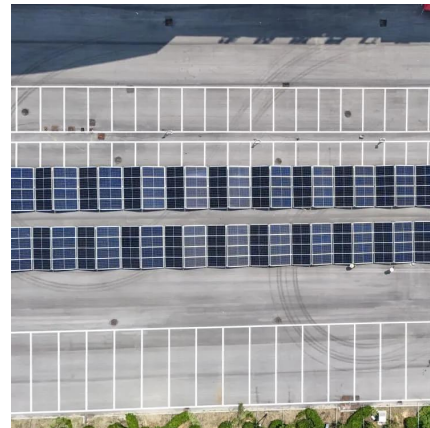
A lithium battery pack consists of multiple individual lithium cells connected in series and/or parallel to achieve the desired voltage and capacity. When cells are connected in ...

### [Free Quote](#)

### [Reformulating Parallel-Connected Lithium-Ion Battery ...](#)

Jaffar Ali Lone, Nilsu Atlan, Simone Fasolato, Davide M Raimondo and Ross Drummond  
Abstract--This work presents analytical solutions for the current distribution in ...

### [Free Quote](#)



### [Can You Safely Connect Two Lithium Batteries in Parallel?](#)

Yes, you can connect two lithium batteries in parallel to increase capacity while maintaining voltage. Ensure both batteries have identical voltage, capacity, and state of charge to prevent ...

### [Free Quote](#)

### [Paralleling Lithium Batteries in Solar Systems: Principles, ...](#)

Solar power generation relies on sunlight, with peak power generation during the day and zero power generation at night. This requires lithium batteries to store sufficient ...

### [Free Quote](#)



#### [How to Put 2 Battery Packs Together?](#)

In this comprehensive guide, as a professional lithium battery pack manufacturer, I'll explain step-by-step how to properly connect two battery packs in series or parallel to create a safe, higher-performance ...

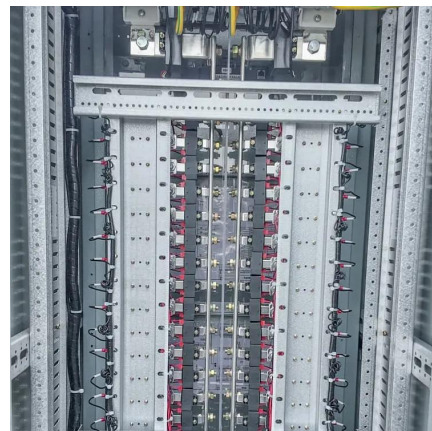
[Free Quote](#)



#### [How to Balance Lithium Batteries with Parallel BMS?](#)

A parallel BMS regulates the current flow between 2 or multiple batteries connected in parallel, learn how it works and how to connect it.

[Free Quote](#)



#### **Management of imbalances in parallel-connected lithium-ion battery packs**

This paper investigated the management of imbalances in parallel-connected lithium-ion battery packs based on the dependence of current distribution on cell chemistries, ...

[Free Quote](#)



#### [Connecting Lithium Batteries in Parallel: What...](#)





Planning to connect lithium batteries in parallel?  
Read our essential guide to learn the right way to  
set up your battery bank for more power.

[Free Quote](#)



[Balancing multiple LiTime 24V batteries connected in parallel](#)

Below two steps are necessary to reduce the  
voltage difference between batteries and let the  
battery system perform the best of in in series  
or/and in parallel. Step 1: Fully ...

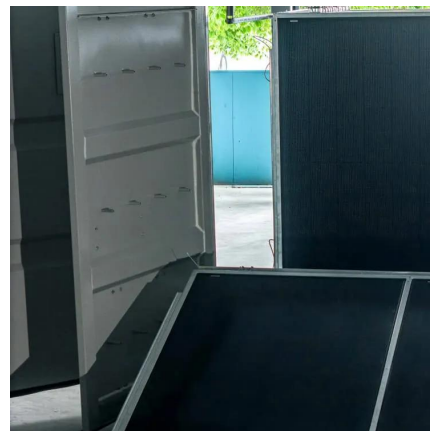
[Free Quote](#)



[Connecting Lithium Batteries in Parallel: What You Need to ...](#)

Planning to connect lithium batteries in parallel?  
Read our essential guide to learn the right way to  
set up your battery bank for more power.

[Free Quote](#)



[Can I parallel multiple Lithium Battery Packs?](#)

A lithium battery pack consists of multiple  
individual lithium cells connected in series and/or  
parallel to achieve the desired voltage and  
capacity. When cells are connected in series, the  
voltage of the battery ...

[Free Quote](#)



[Lithium Series, Parallel and Series and Parallel](#)



Lithium Series, Parallel and Series and Parallel Connections Introduction Lithium battery banks using batteries with built-in Battery Management Systems (BMS) are created by ...

[Free Quote](#)



[How to Balance Lithium Batteries with Parallel ...](#)

A parallel BMS regulates the current flow between 2 or multiple batteries connected in parallel, learn how it works and how to connect it.

[Free Quote](#)



[How to Put 2 Battery Packs Together?](#)

In this comprehensive guide, as a professional lithium battery pack manufacturer, I'll explain step-by-step how to properly connect two battery packs in series or parallel to create a ...

[Free Quote](#)



## Contact Us

For catalog requests, pricing, or partnerships, please visit:  
<https://getonco.co.za>



## Scan QR Code for More Information



<https://getonco.co.za>