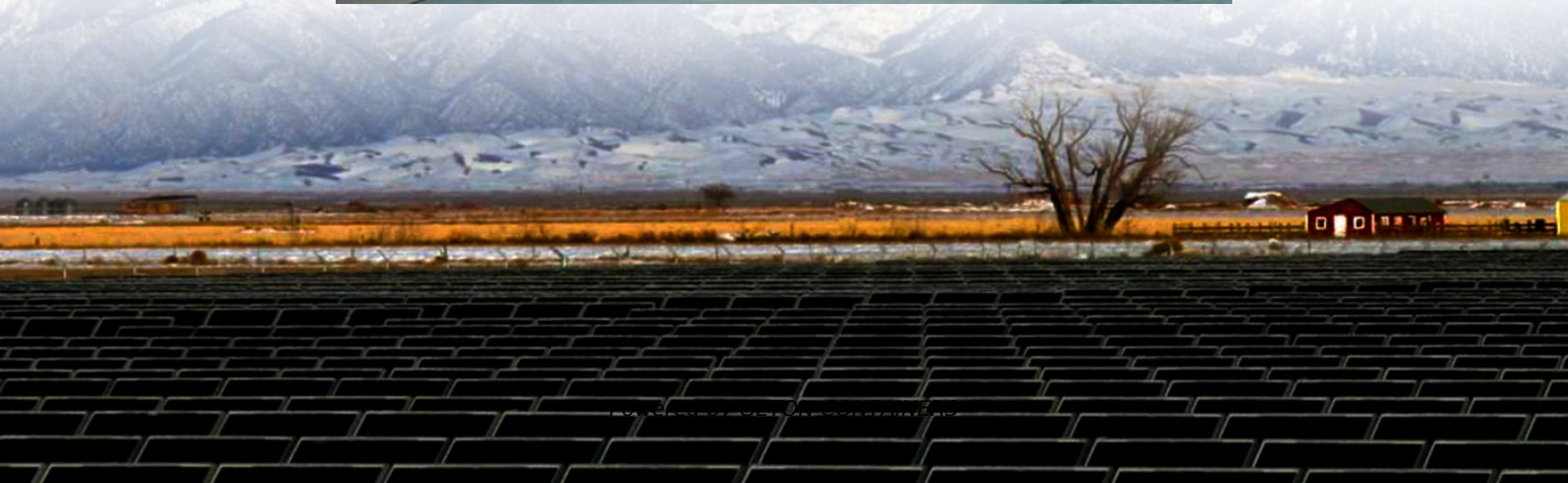


**TdHow many users can a base  
station generally provide  
communication for**





## Overview

---

What is a base station in a telecommunications network?

A base station is a critical component in a telecommunications network. A fixed transceiver that acts as the central communication hub for one or more wireless mobile client devices. In the context of cellular networks, it facilitates wireless communication between mobile devices and the core network.

Why are base stations important?

Base stations are the backbone of wireless communication networks, playing a pivotal role in signal transmission, network reliability, and high-speed data connectivity. As technology evolves, the importance of base stations will continue to grow, addressing new challenges and supporting the ever-expanding demand for wireless communication services.

What is a base station and how does it work?

A base station is a fixed point of communication between mobile devices and the wider telecom network. It transmits and receives radio signals, enabling your phone to access voice, data, and internet services. Together, thousands of base stations form a seamless web of coverage known as a cellular network. How Does It Work?

.

Why are base stations important in cellular communication?

Base stations are important in the cellular communication as it facilitate seamless communication between mobile devices and the network communication. The demand for efficient data transmission are increased as we are advancing towards new technologies such as 5G and other data intensive applications.



## TdHow many users can a base station generally provide communica

---



### [What is the maximum number of users a DMR Base Station can ...](#)

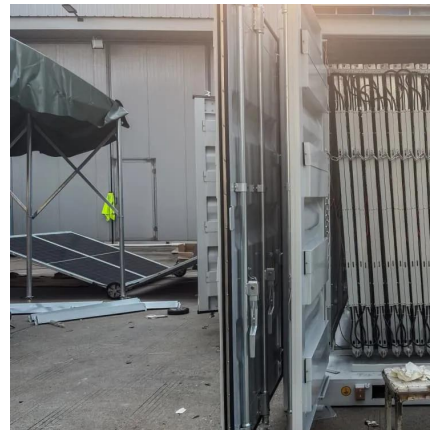
The base station also supports multiple radio carriers, which can be used to increase the overall capacity of the system. For emergency and mobile deployments, we offer the Transportable ...

### [Free Quote](#)

### [What Is the Role of a Base Station in Wireless Communication?](#)

Base stations are the backbone of wireless communication networks, playing a pivotal role in signal transmission, network reliability, and high-speed data connectivity. As ...

### [Free Quote](#)



### [What Does a Base Station Do and Why Is It Essential for ...](#)

A base station is a fixed point of communication between mobile devices and the wider telecom network. It transmits and receives radio signals, enabling your phone to access ...

### [Free Quote](#)



### [Distribution of the Number of Users per Base Station in ...](#)

Abstract--We consider the number of users associating with each base station in a cellular network. Extending and unifying the characterizations for certain settings available in ...



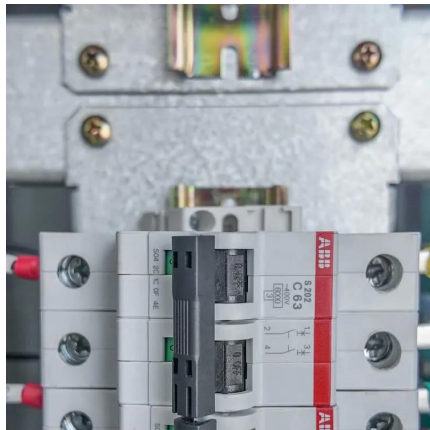
[Free Quote](#)



## Understanding Base Stations: The Backbone of Wireless Communication

These small cells help alleviate congestion and ensure that 5G networks can deliver high speeds and ultra-low latency to end-users. Additionally, 5G base stations will rely heavily ...

[Free Quote](#)



## Base Stations

The present-day tele-space is incomplete without the base stations as these constitute an important part of the modern-day scheme of wireless communications. They are referred to as cell towers or cellular ...

[Free Quote](#)



## What is a Base Station in Telecommunications?

What is a Base Station? A base station is a critical component in a telecommunications network. A fixed transceiver that acts as the central communication hub for one or more wireless mobile ...

[Free Quote](#)







### [The effective coverage radius of a Telecom base station](#)

When base stations handle more users or higher data rates, they consume more energy. Cooling Systems: Macrocells in particular often require cooling systems, especially in ...

[Free Quote](#)



### [Distribution of the Number of Users per Base Station in ...](#)

We consider the number of users associating with each base station in a cellular network. Extending and unifying the characterizations for certain settings available in the ...

[Free Quote](#)

### [What is a Base Station in ...](#)

What is a Base Station? A base station is a critical component in a telecommunications network. A fixed transceiver that acts as the central communication hub for one or more wireless mobile client devices. In the ...

[Free Quote](#)



## Contact Us

For catalog requests, pricing, or partnerships, please visit:  
<https://getonco.co.za>



## Scan QR Code for More Information



<https://getonco.co.za>