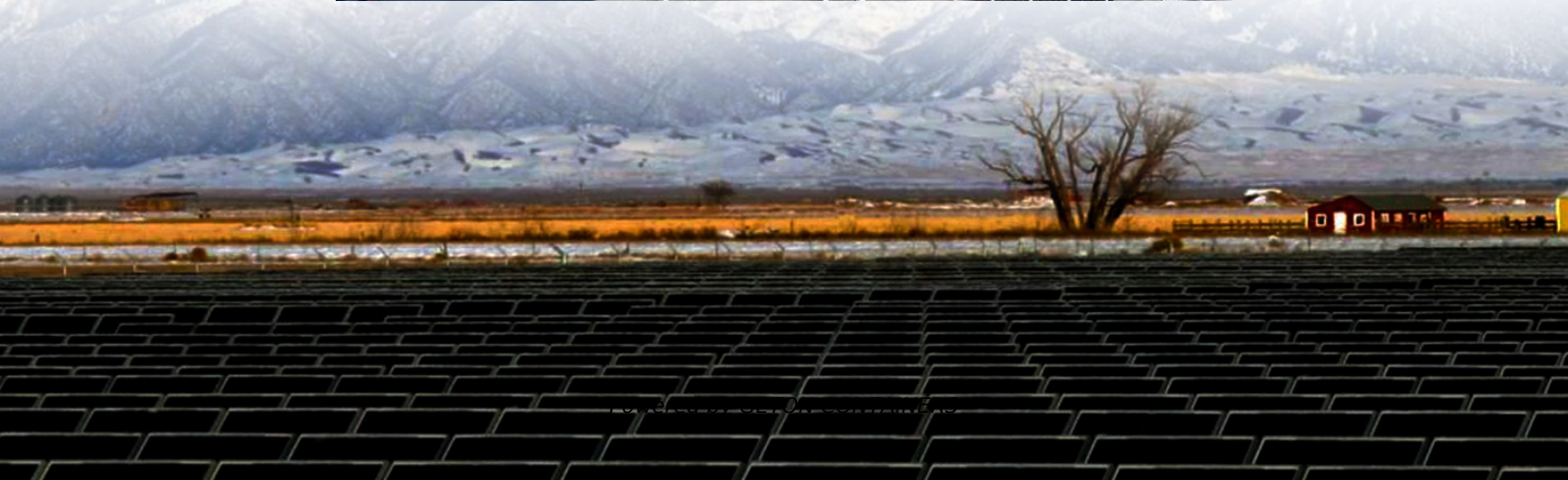
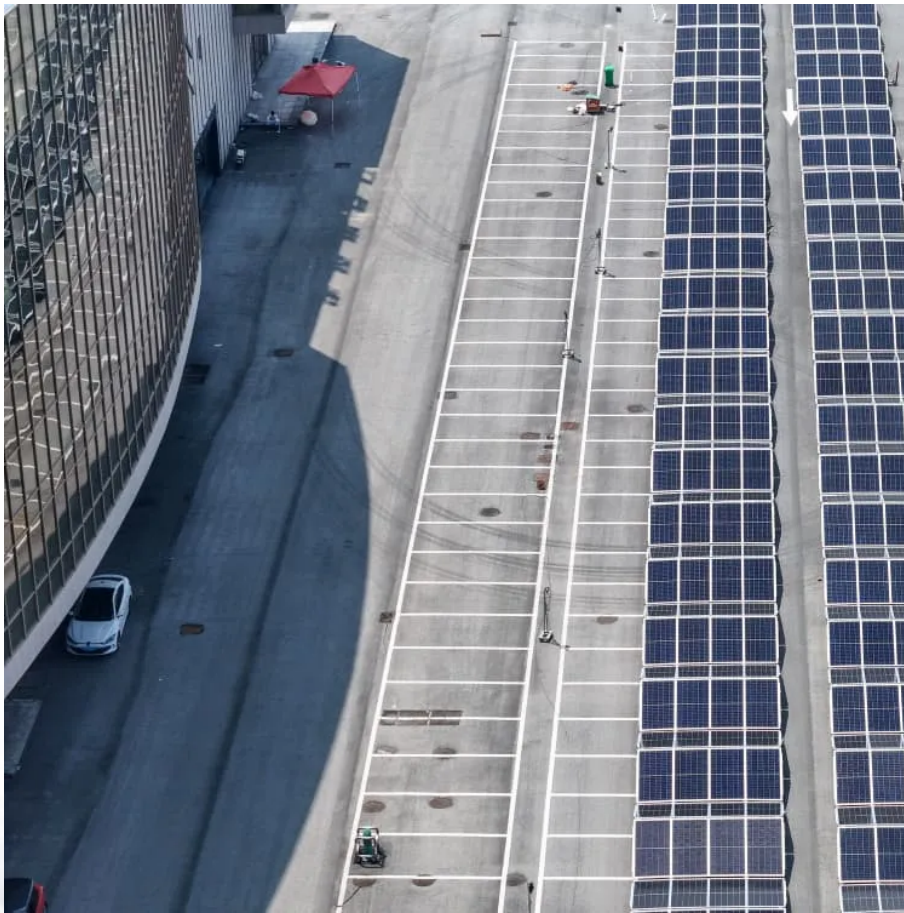


Station-type solar container energy storage system maintenance





Station-type solar container energy storage system maintenance



["Could you tell me where the train station is?" Is it correct?](#)

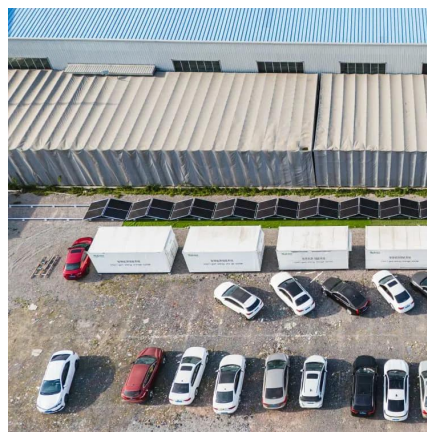
In BE you don't need to say train/rail/railway. You can just say station, because railway station is what it means by default. If you mean a different kind of station, you would ...

[Free Quote](#)

[bus station/bus stop . WordReference Forums](#)

A bus "station" is not a bus "terminal"; though a "terminal" is a "station-on-steroids". This is why certain facilities are called bus, train, and or passenger terminals; while other ...

[Free Quote](#)



[railway station or train station? . WordReference Forums](#)

A train station (commonly station, railway station (mainly British Commonwealth) or railroad station (mainly US)) is a railway facility where trains regularly stop to load or unload ...

[Free Quote](#)



in/at the station

Hi, I was wondering which preposition is better in the following sentence because I have seen both options: "The train arrives in Waterloo station at 6:30" or "The train arrives at ...

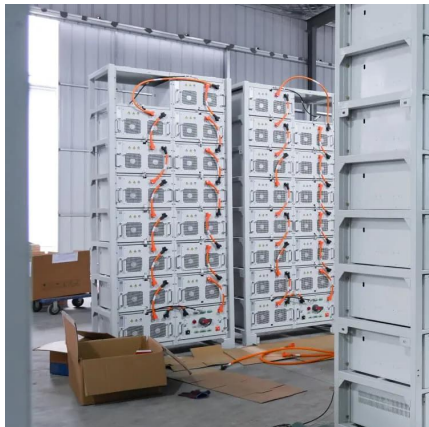
[Free Quote](#)



next station vs next stop

Hello everyone, While riding the metro in Hamburg, Germany, I recognized that the announcement went "next station, [name of metro station]." I've already heard announcements ...

[Free Quote](#)



[at the/in the police station/fire station](#)

Well, just to start things off, generally in American English we say the police station, the fire station, the hospital, etc. This is even if we don't have a clue which one is intended.

[Free Quote](#)



[to a station or to the station](#)

We would really need more context. It depends on whether we are talking about a particular station or any station. I don't think there can be a rule about only using 'the' in these ...

[Free Quote](#)





[When should I capitalize "station" in a station name?](#)

The line has four stations, which include Union Station, Bloor GO / Dundas West subway station, Weston GO station and Toronto Pearson International Airport station at ...

[Free Quote](#)



Contact Us

For catalog requests, pricing, or partnerships, please visit:
<https://getonco.co.za>

Scan QR Code for More Information



<https://getonco.co.za>