

Solar power station inverter disconnected from the grid





Overview

Can a PV inverter be disconnected from a grid?

Some properties of a PV inverter grid connection can cause the grid voltage at the inverter to increase and exceed the permissible operating range if the feed power is high. If this occurs, SMA grid guard, an independent disconnection device integrated into the inverter, will safely disconnect the inverter from the grid.

How does a grid-tied inverter work?

During a grid power outage, a grid-tied inverter seamlessly switches to utilize stored energy or renewable sources like solar panels and wind turbines, securing uninterrupted power supply. It operates independently of the grid, enhancing energy autonomy and preventing backfeeding electricity during emergencies.

How do grid-tied inverters work during a power outage?

During a power outage, grid-tied inverters can continue to operate using power from the solar panels. This is made possible through innovative inverter technology that allows the system to function independently of the grid. By leveraging this advancement, you can liberate yourself from the constraints of grid dynamics during outages.

What happens if you don't connect your solar panels to the grid?

This interruption in energy production can affect your overall energy efficiency. Without a connection to the grid, the excess energy generated by your solar panels can't be utilized or stored, leading to a temporary halt in energy production until grid power is restored.



Solar power station inverter disconnected from the grid



[Solar Inverter Failures: Causes, Consequences, ...](#)

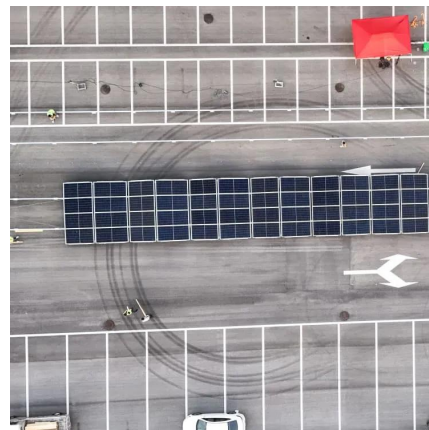
Solar inverters play a crucial role in converting the DC electricity generated by solar panels into AC electricity that can be used by homes and fed into the grid. Understanding the common failures in these ...

[Free Quote](#)

[Q1: A011 Grid Loss:Disconnected with grid](#)

INVT Solar is a professional solar inverters manufacturer and national high-tech enterprise. Founded in 2015, it is a wholly-owned subsidiary of INVT. It mainly offers PV ...

[Free Quote](#)



[Can You Really Use Solar When the Grid Goes Down?](#)

To use solar panels during a power outage, you will need a solar energy system equipped with battery storage and an appropriate inverter. This will enable you to use stored ...

[Free Quote](#)

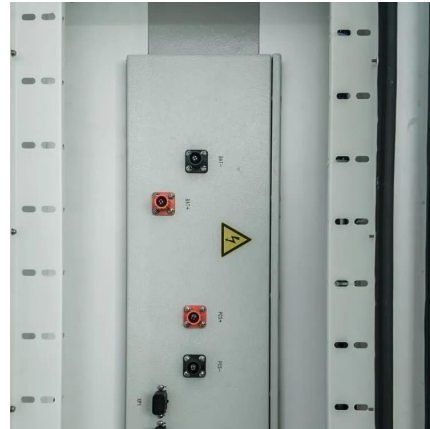


[What Happens to a Grid-Tied Inverter When ...](#)

During a grid power outage, a grid-tied inverter seamlessly switches to utilize stored energy or renewable sources like solar panels and wind turbines, securing uninterrupted power supply. It operates ...



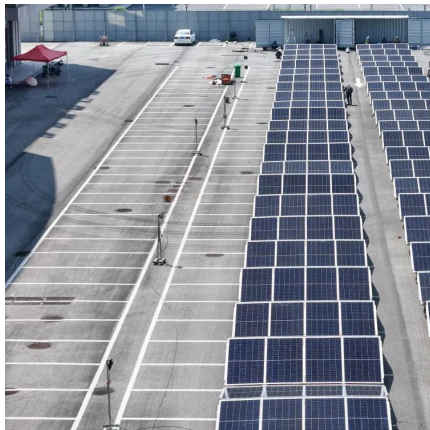
[Free Quote](#)



[Can You Really Use Solar When the Grid Goes ...](#)

To use solar panels during a power outage, you will need a solar energy system equipped with battery storage and an appropriate inverter. This will enable you to use stored solar power during a power ...

[Free Quote](#)



[Three Common Misconceptions About Grid-tied Inverters](#)

Discover common misconceptions about grid-tied inverters in solar PV systems, including voltage output, anti-islanding protection, and DC string voltage effects.

[Free Quote](#)



[What Happens If PV Modules Are Not ...](#)

Solar energy is a powerful and eco-friendly resource, leveraging the sun's vast energy to meet our power needs. But what happens if PV modules, or solar panels, are disconnected when not in use? Disconnection stops ...

[Free Quote](#)



[Inverter disconnecting and reconnecting](#)



Yes, if your cable from inverter to your house Dist box is too small you will get voltage spikes at the inverter and it will disconnect based on the grid voltage being too high. Long term solution is to increase the ...

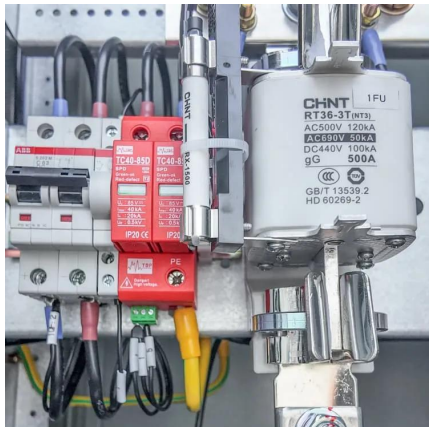
[Free Quote](#)



[Inverter disconnecting and reconnecting](#)

Yes, if your cable from inverter to your house Dist box is too small you will get voltage spikes at the inverter and it will disconnect based on the grid voltage being too high. ...

[Free Quote](#)



[What Happens If PV Modules Are Not Connected? Let's Find...](#)

Solar energy is a powerful and eco-friendly resource, leveraging the sun's vast energy to meet our power needs. But what happens if PV modules, or solar panels, are disconnected when not in ...

[Free Quote](#)



[What if the solar panel is disconnected? , NenPower](#)

1. The solar panel system may face various outcomes upon disconnection. 2. Immediate disconnection halts energy production, leading to reliance on alternative energy ...

[Free Quote](#)



Solar Inverter Failures: Causes, Consequences, and



Impact on Energy

Solar inverters play a crucial role in converting the DC electricity generated by solar panels into AC electricity that can be used by homes and fed into the grid. Understanding ...

[Free Quote](#)



[How to Safely Connect a Solar Inverter to Your House](#)

The solar inverter acts as the bridge between the energy generated by photovoltaic panels and the electrical system of a home. Solar panels produce direct current (DC) electricity, but ...

[Free Quote](#)



[What Happens to a Grid-Tied Inverter When Grid Power Is Off?](#)

During a grid power outage, a grid-tied inverter seamlessly switches to utilize stored energy or renewable sources like solar panels and wind turbines, securing ...

[Free Quote](#)



Grid Connection

Content Some properties of a PV inverter grid connection can cause the grid voltage at the inverter to increase and exceed the permissible operating range if the feed ...

[Free Quote](#)





Contact Us

For catalog requests, pricing, or partnerships, please visit:
<https://getonco.co.za>

Scan QR Code for More Information



<https://getonco.co.za>