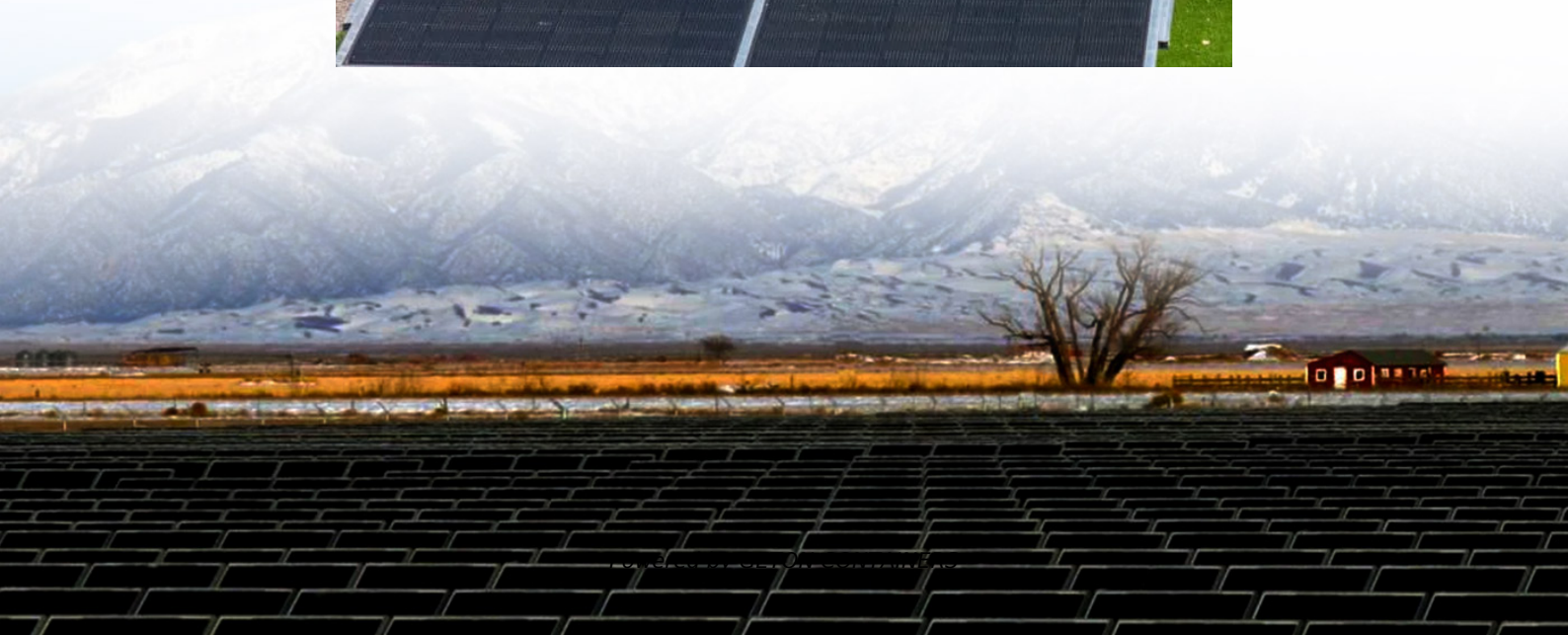


Monocrystalline silicon high-efficiency solar modules





Monocrystalline silicon high-efficiency solar modules



[Autonomous camera with solar panels](#)

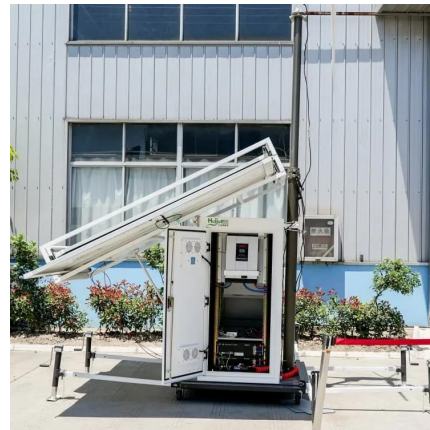
I took some time on the internet to find a way to do an autonomous camera (bird camera trap). The goal is to take a photo each time a bird gets close to the bird feeder I am ...

[Free Quote](#)

[Proyecto: riego macetas terraza con recarga solar](#)

Hola a todos. En verano, me marchó de mi casa al menos un mes, y corto luz y agua. Necesito un sistema para el riego de las macetas que tengo en la terraza. Estoy en la ...

[Free Quote](#)



[JMISC and JMEDIA high speed headers](#)

Are the JMISC and JMEDIA high speed headers designed as a new standard to be used with upcoming boards as well, or are they just conveniently routing out what is ...

[Free Quote](#)

Solar charging 18650

There are a lot of junk solar charging power packs out there. The cells inside are probably fine, but the solar panels are so small, they simply cannot do more than a slow trickle ...

[Free Quote](#)



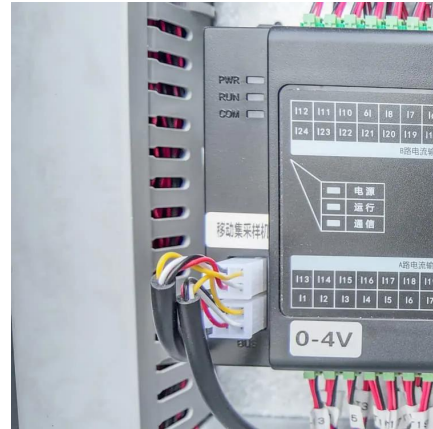
[using solar power to power arduino](#)

6V 1.1W 200mA Mini Monocrystalline Solar Panel
Photovoltaic Panel Only US\$2.90, buy best 6V
1.1W 200mA Mini Monocrystalline Solar Panel
Photovoltaic Panel sale ...

[Free Quote](#)



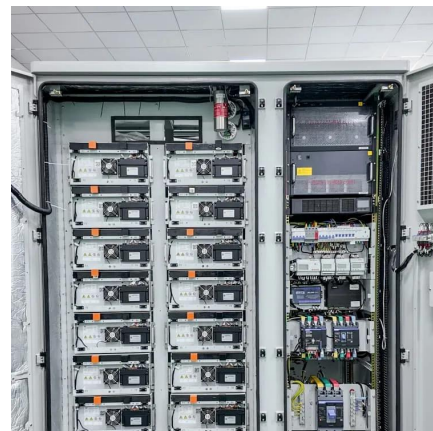
[solar input power source: 100mA 7.2V vs 200mA 5V](#)



[Solar Powering Firebeetle ESP32-E](#)

Beginners Question! Do I need something between esp32 board and solar panel? The ESP32-E has its own LIPO charging circuitry on board (TP4056X). I was hoping to add a ...

[Free Quote](#)



[RS232 data via MAX3232 \[SOLVED\]](#)

I am using 2 Arduino Nano ESP32's with 2 MAX3232 IDR modules, along with a gender changer. I have connected the circuit like this:
Receiver Circuit: MAX3232: GND - GND ...

[Free Quote](#)



Which arduino are you using? If your arduino uses 5v logic level (uno, mega 2560, leonardo, etc), the 5v solar panel will likely not be able to keep it stable. I would lean toward ...

[Free Quote](#)



[Is ina169 sensor can sensing both voltages,current, and ...](#)

It is a current sensing device. It converts current passed through a 0.1ohm resistor to an output voltage which you can then evaluate with an analog pin. I guess you could also ...

[Free Quote](#)



[Monocrystalline, Polycrystalline or Amorphous solar cell](#)

I brought this low cost cell with no specification. ? How can I tell if it is Monocrystalline, Polycrystalline or Amorphous solar cell? I was told different type has different ...

[Free Quote](#)



Contact Us

For catalog requests, pricing, or partnerships, please visit:
<https://getonco.co.za>



Scan QR Code for More Information



<https://getonco.co.za>