

Kosovo inverter 60kw parameters





Overview

What is a 60 kW inverter?

Medha's 60 kW inverters provide high conversion efficiency and feature six independent Maximum Power Point Tracking (MPPT) inputs. The high PV input voltage reduces losses on the DC wiring, while low startup and stop voltages maximize energy harvest.

What are CSI solar inverters?

CSI Solar's grid-tied, transformer-less string inverters help to accelerate the use of three-phase string architecture for industrial and commercial rooftop applications. These inverters are modular design building blocks that provide high yield and enable significant BoS cost savings.

What is a 60 kW solar string inverter?

Medha's 60 kW string inverters are designed to deliver superior performance, reliability, and efficiency, making them an ideal choice for small to medium-scale solar power projects. Medha's 60kW solar string inverter ensures optimal energy conversion and high efficiency for commercial and industrial solar installations.

What is a goodwe SMT 50-60 kW inverter?

GoodWe SMT 50-60kW Series inverter is ideal for medium and large-scale commercial installations. Harvest solar energy and generate environmental-friendly power for increased return on investment brought by high yields with your commercial PV system.



Kosovo inverter 60kw parameters



[40kW~60kW Three-Phase High Voltage Hybrid Inverter](#)

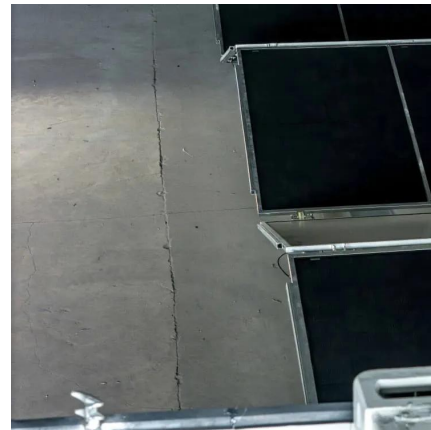
40kW~60kW Three-Phase High Voltage Hybrid Inverter SSE-HH40K~60K-P3EU three-phase high-voltage hybrid inverter offers high efficiency for commercial and industrial ...

[Free Quote](#)

[50-60kW PV string inverter_three phase inverter](#)

S5-GC (50-60)K three-phase series string inverter are suitable for the installation of three-phase input pv system of commercial and industrial PV plants. Adopt 5/6 MPPT design to provide a ...

[Free Quote](#)



[50-60kW PV string inverter_three phase ...](#)

S5-GC (50-60)K three-phase series string inverter are suitable for the installation of three-phase input pv system of commercial and industrial PV plants. Adopt 5/6 MPPT design to provide a more flexible configuration ...

[Free Quote](#)

[60kw photovoltaic inverter parameters](#)

How does a PV inverter work? Connecting (green LED flashing) #52-53 Once the PV input voltage reaches the DC initial voltage, the inverter goes into operation. The inverter performs a ...



[Free Quote](#)



[Growatt MAX 60 KTL3 LV , 3-Phase industrial inverter](#)

Growatt MAX TL3-LV is energy storage three-phase inverter designed for residential and commercial applications. Available capacities: 50kW, 60kW, 70kW, 80kW, 100kW, 110kW, ...

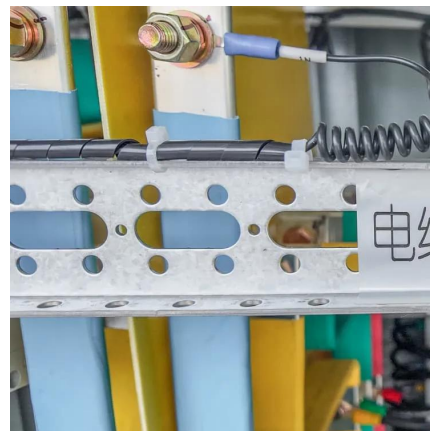
[Free Quote](#)



[CS_Datasheet_Three-Phase_GI_100-110K_V1.0_E1_SA_A4](#)

CSI-40kW , CSI-50kW , CSI-60kW CSI Solar's grid-tied, transformer-less string inverters help to accelerate the use of three-phase string architecture for industrial and ...

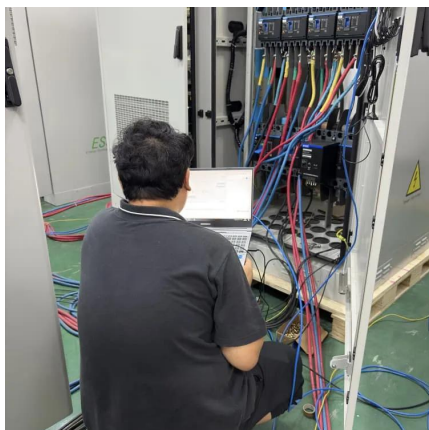
[Free Quote](#)



[Three Phase Hybrid Inverter](#)

Flexible Abundant Configuration Max. charge/discharge current A, % EPS peak output power IP protection DC& AC Type II SPD: prevent lightning damage Smart I-V curve ...

[Free Quote](#)

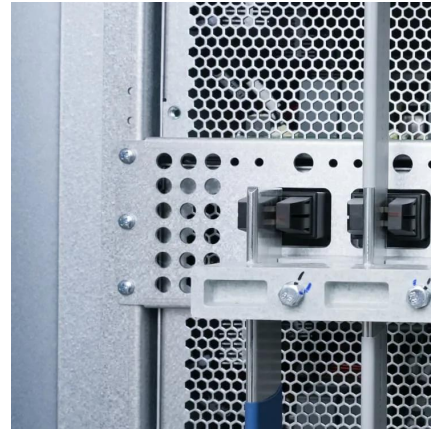




Growatt MAX 60 KTL3 LV , 3-Phase industrial inverter

Growatt MAX TL3-LV is energy storage three-phase inverter designed for residential and commercial applications. Available capacities: 50kW, 60kW, 70kW, 80kW, ...

[Free Quote](#)



Contact Us

For catalog requests, pricing, or partnerships, please visit:
<https://getonco.co.za>

Scan QR Code for More Information



<https://getonco.co.za>