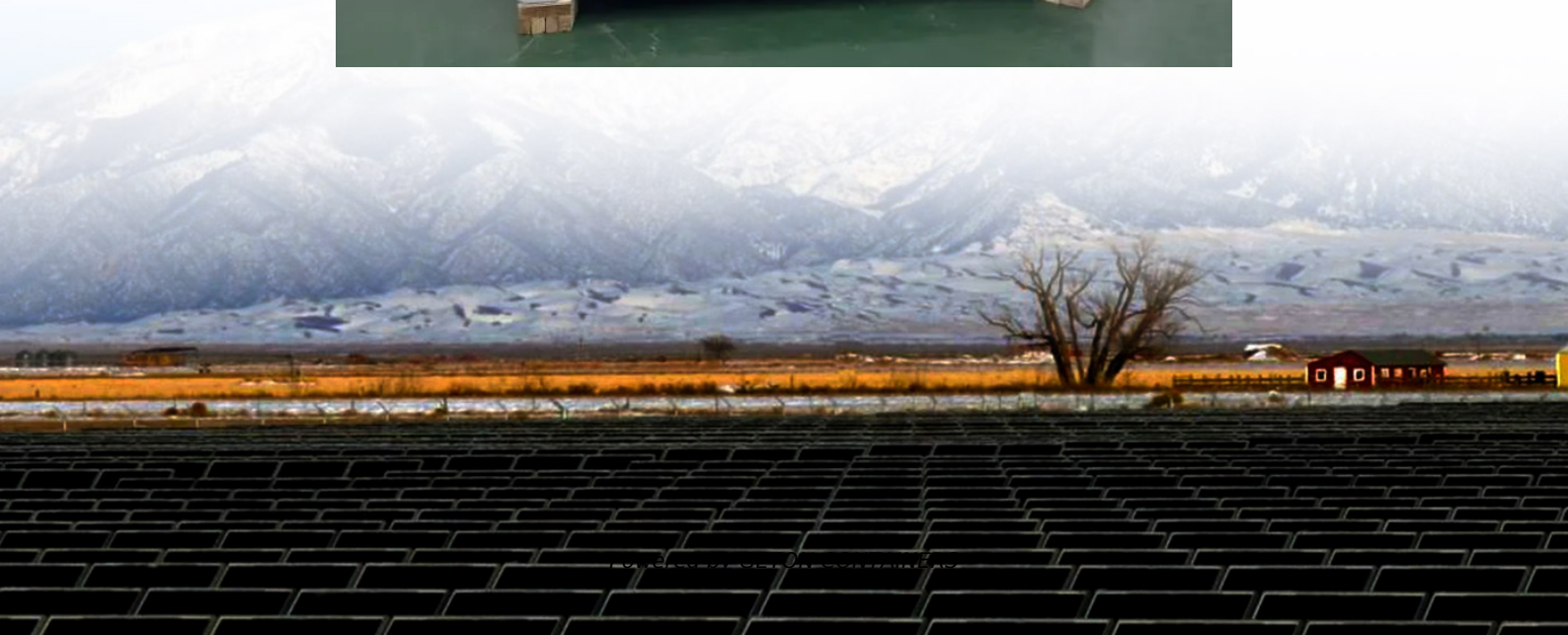


Is the communication room the base station





Overview

What is a base station in a telecommunications network?

A base station is a critical component in a telecommunications network. A fixed transceiver that acts as the central communication hub for one or more wireless mobile client devices. In the context of cellular networks, it facilitates wireless communication between mobile devices and the core network.

Why is a base station important in wireless communication?

A base station is fundamental in wireless communication, because it facilitates the connection between your device and the wider network. Without base stations, mobile data and voice services would be impossible, as there would be no infrastructure to handle the transmission of signals.

What are base stations & how do they work?

Base stations are the critical components that enable mobile phones and other devices to connect to cellular networks. Here's how they work in a typical mobile network: Signal Transmission and Reception: Mobile devices communicate with the nearest base station via radio waves.

What is the difference between a radio and a base station?

A base station is usually larger and more powerful than a radio and is designed to handle multiple connections simultaneously. In telecommunications, a base station is a fixed transceiver that serves as the main communication point for one or more wireless mobile client devices.



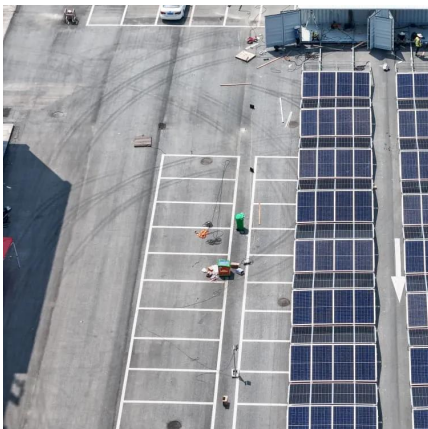
Is the communication room the base station



Understanding Base Stations: The Backbone of Wireless Communication

Base Station But what exactly is a base station, and how does it work in wireless communication networks? This article explores the concept of base stations, their functions, ...

[Free Quote](#)



[What is a Base Station? -- From Communication Core to ...](#)

The base station is an indispensable piece of infrastructure in the mobile communication network, silently supporting every phone call, message, and network ...

[Free Quote](#)

[What Is the Role of a Base Station in Wireless Communication?](#)

Base stations are the backbone of wireless communication networks, playing a pivotal role in signal transmission, network reliability, and high-speed data connectivity. As ...

[Free Quote](#)



[What is a Base Station in ...](#)

What is a Base Station? A base station is a critical component in a telecommunications network. A fixed transceiver that acts as the central communication hub for one or more wireless mobile client devices. In the ...

[Free Quote](#)



[Base Station's Role in Wireless Communication Networks](#)

A base station is fundamental in wireless communication, because it facilitates the connection between your device and the wider network. Without base stations, mobile data and voice ...

[Free Quote](#)



[What is a Base Station in Telecommunications?](#)

What is a Base Station? A base station is a critical component in a telecommunications network. A fixed transceiver that acts as the central communication hub for one or more wireless mobile ...

[Free Quote](#)



What Is A Base Station?

[1. What Is a Base Station and What Are Its Core Components?](#)

A mobile communication base station is the radio facility that covers a specific area and enables data transmission between mobile phones and the core network. It is the ...

[Free Quote](#)



A base station is an integral component of wireless communication networks, serving as a central point that manages the transmission and reception of signals between ...

[Free Quote](#)



Base Stations

The present-day tele-space is incomplete without the base stations as these constitute an important part of the modern-day scheme of wireless communications. They are referred to as cell towers or cellular ...

[Free Quote](#)



Contact Us

For catalog requests, pricing, or partnerships, please visit:
<https://getonco.co.za>

Scan QR Code for More Information



<https://getonco.co.za>