

# How to connect the power supply of the old base station





## Overview

---

How do I connect a base station to a network?

1. Connect the base station power and the network using method a or method b.

- a. AC Power Option
- b. PoE (Power over Ethernet) Option

If you choose method a, use Yealink supplied power adapter (5V/0.6A). A third-party power adapter may damage the base station. If you choose method b, you do not need to connect the power adapter.

What is a base station power supply?

This acts as the “blood supply” of the base station, ensuring uninterrupted power. It includes:

- AC distribution box: Distributes mains power and offers surge protection.
- Switch-mode power supply: Converts and stabilizes power while managing DC output.
- Battery banks: Serve as backup power to keep systems running during outages.

3.

How does a base station work?

Depending on the size of base station and its traffic, the base station may also have another sources of power such as a diesel generator, wind turbine or biofuels. The base station is a transceiver and acts as an interface between a mobile station and network using microwave radio communication.

What is a base station connection diagram?

The connection diagram provides a clear overview of how the main base station equipment operates within the network. Surrounding this central "brain" are the “Four Guardians” that ensure seamless functionality:

- Power Supply: Provides a steady and uninterrupted energy source to keep the equipment operational.



## How to connect the power supply of the old base station

---



### [DC Power Supply Connection Alternatives](#)

Base Station Sources For a permanent base station installation, an AC power supply is usually the preferred source of power. The adapter shown in the upper right of the ...

### [Free Quote](#)

### [Management and maintenance of base ...](#)

This article focuses on the three parts of switching power supply: "types and usage scenarios, configuration principles and algorithms, and daily management and maintenance".

### [Free Quote](#)



### **Power Base Station**

The transmitter characteristics define RF requirements for the wanted signal transmitted from the UE and base station, but also for the unavoidable unwanted emissions outside the transmitted ...

### [Free Quote](#)

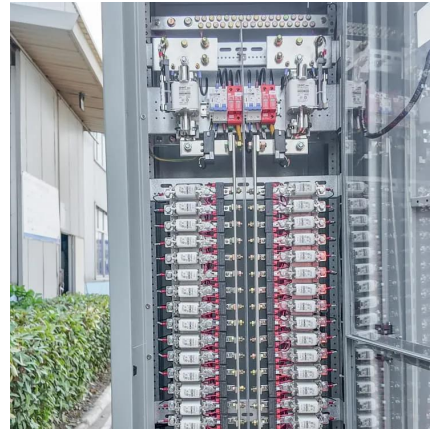


### [Complete Guide to 5G Base Station ...](#)

Switch-Mode Power Supply: This critical component performs rectification, filtering, and voltage stabilization, converting AC power into DC power. DC Power Output: The processed DC power is supplied to main ...



[Free Quote](#)



[Power converter for base station](#)

Most 30 amp power supplies are only rated between 22 and 25 amps continuous. IF you are only connecting one radio (up to 50 watts) to the power supply then any 30 amp ...

[Free Quote](#)



[Common ways to set up a base station](#)

The antennas are connected to the receiver by high quality RF cables. The receiver is connected to a permanent power supply (mains or generator power). The internal battery of ...

[Free Quote](#)



[3.3 Power the Base Station. Ascom \(Sweden\) AB BS330, IPBL ...](#)

Installation guide for IP-DECT Base Station IPBS1, IPBS2 and IP-DECT Gateway IPBL. Learn how to power, connect and mount the devices.

[Free Quote](#)



[How to create a Universal Power Supply for your Base Station](#)



The Graphite base station calls for a power supply that supplies 12VDC at up to 1.25 Amperes, i.e. 15W (multiply the volts x amps to get the power rating in watts). I am ...

[Free Quote](#)



[Power converter for base station](#)

Most 30 amp power supplies are only rated between 22 and 25 amps continuous. IF you are only connecting one radio (up to 50 watts) to the power supply then any 30 amp supply will work. I have several power ...

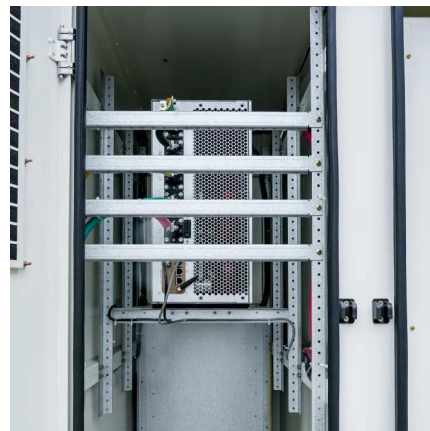
[Free Quote](#)



#### **Management and maintenance of base station switching power supply**

This article focuses on the three parts of switching power supply: "types and usage scenarios, configuration principles and algorithms, and daily management and maintenance".

[Free Quote](#)



[?How to Set Up a Replacement Base Station , SimpliSafe ...](#)

Then, power down your Base Station. To do this, remove the power cable from the bottom of the Base Station, then use your own Phillips head screwdriver to remove the screw from the base.

...

[Free Quote](#)



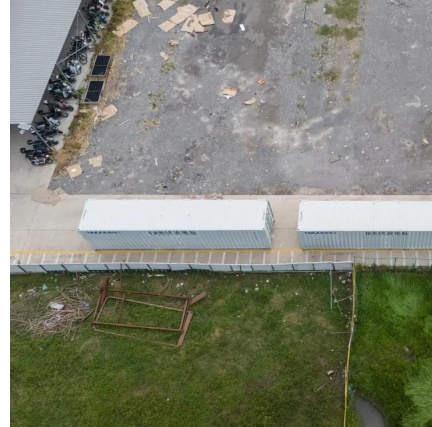
[Complete Guide to 5G Base Station Construction , Key Steps.](#)



...

Switch-Mode Power Supply: This critical component performs rectification, filtering, and voltage stabilization, converting AC power into DC power. DC Power Output: The ...

[Free Quote](#)



## Contact Us

---

For catalog requests, pricing, or partnerships, please visit:  
<https://getonco.co.za>

**Scan QR Code for More Information**



<https://getonco.co.za>