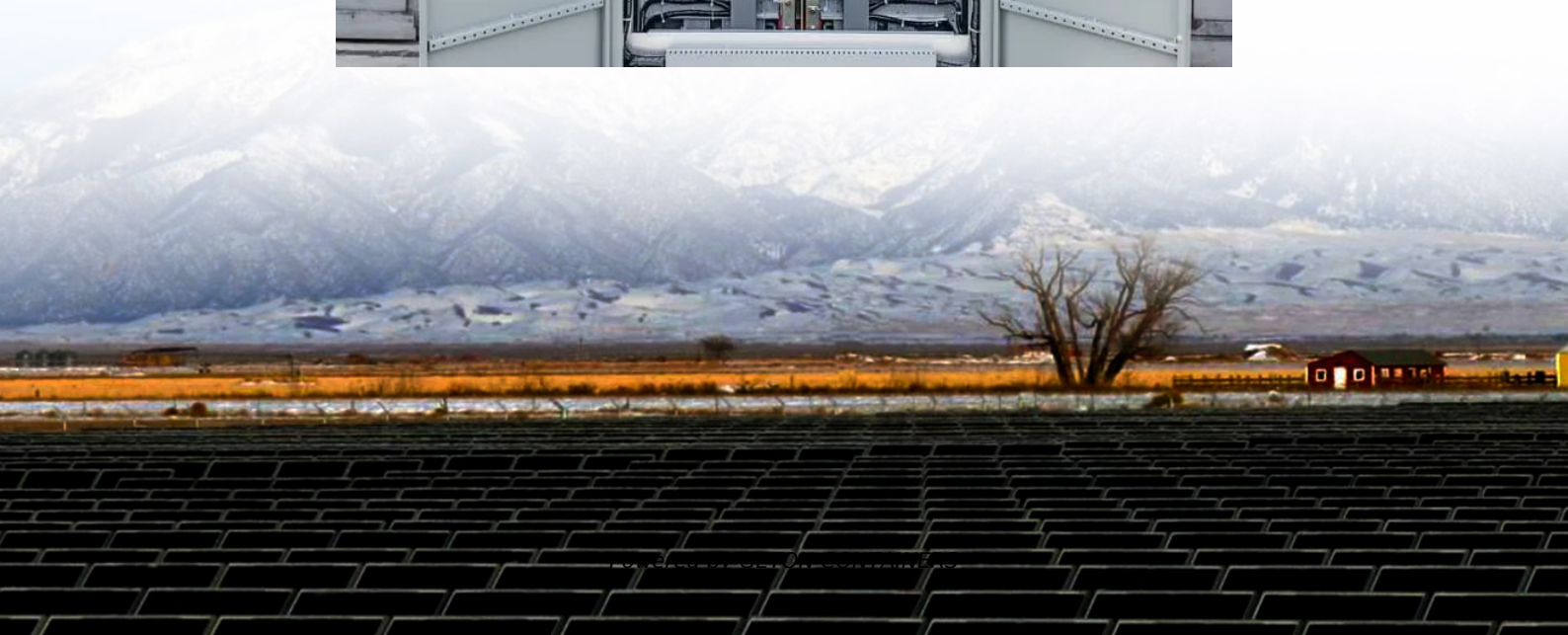


# How many watts does a solar panel have per square meter





## Overview

---

What is watts per square meter?

Watts per square meter is a measurement that quantifies the power output of solar panels relative to their surface area. It indicates how much electricity a solar panel produces per space unit, allowing for comparisons between different panel types and sizes.

How many watts per square meter is a solar panel?

Solar Panel Output =  $1000 \text{ W/m}^2 \times 1.5 \text{ m}^2 = 1500 \text{ watts}$  Watts per square meter are a critical metric for several reasons: 1. Efficiency Comparison: Comparing the  $\text{W/m}^2$  among different solar panels allows consumers to assess the efficiency of various models.

How much power does a solar panel generate?

Power Output =  $0.18 \times 1000 \text{ W/m}^2 = 180 \text{ W/m}^2$  This means that for every square meter of this solar panel, you can generate 180 watts of power under optimal conditions. Panel Orientation and Tilt: The angle at which the panel is installed can significantly affect its efficiency.

How much solar energy is received per square meter?

The amount of solar intensity received by the solar panels is measured in terms of square per meter. The sunlight received per square meter is termed solar irradiance. As per the recent measurements done by NASA, the average intensity of solar energy that reaches the top atmosphere is about 1,360 watts per square meter.



## How many watts does a solar panel have per square meter

---



### [Solar Panel Wattage Calculation: How To ...](#)

Solar Panel Wattage Calculations: The Complete Guide to Power Output and Efficiency Optimization for Professional Installers  
Understanding solar panel wattage calculation has become mission-critical for solar installers and ...

### [Free Quote](#)

### [Watts Per Square Meter Solar Panel - The Go-to Guide](#)

Solar panels have become a popular and viable renewable energy source. Solar panels can convert sunlight into electricity by harnessing the power of the sun's rays, making ...

### [Free Quote](#)



### [How many watts per square meter is a solar ...](#)

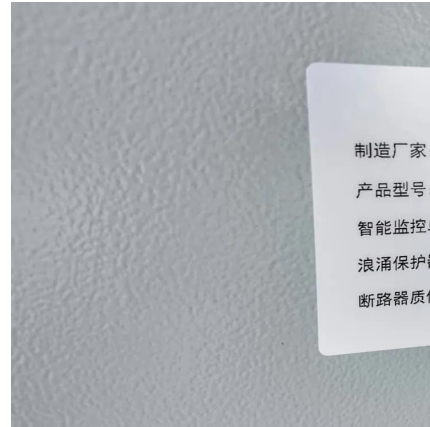
1. The average power output of a solar panel is approximately 150 to 400 watts per square meter, depending on various factors including the technology used and ...

### [Free Quote](#)

### [Solar Panels Watts per Square Meter](#)

Solar panels are at the forefront of innovation and sustainability when it comes to renewable energy sources. Harnessing the power of the sun to generate electricity is an eco ...

### [Free Quote](#)



### [Solar Panel Power Per Square Meter: How to ...](#)

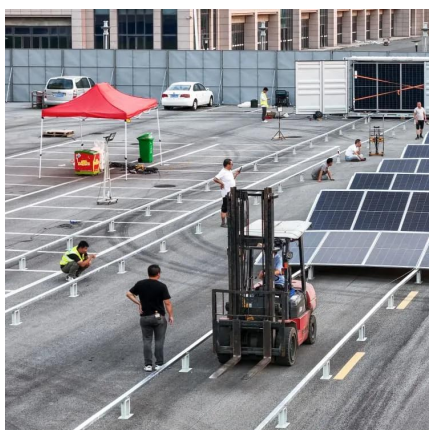
Final Words Calculating the solar panel power per square meter is an essential step in understanding the efficiency and potential of solar energy systems. By considering factors such as panel efficiency, ...

[Free Quote](#)

### [Solar Panel Wattage Calculation: How To Calculate In 2025?](#)

Solar Panel Wattage Calculations: The Complete Guide to Power Output and Efficiency Optimization for Professional Installers Understanding solar panel wattage calculation has ...

[Free Quote](#)



### [How to Understand Solar Panel Watts Per Square Meter](#)

Different panel types, such as monocrystalline, polycrystalline, thin-film, and high-efficiency panels, have varying typical watts per meter square outputs. Maximizing watts per ...

[Free Quote](#)





### [How to Calculate Solar Power per Square Meter](#)

Solar power per square meter refers to the amount of solar energy that can be harnessed by a solar panel over a specific area, typically expressed in watts per square meter ( $\text{W/m}^2$ ). This measurement is crucial ...

[Free Quote](#)



### [Solar Panels Watts per Square Meter](#)

Solar panels are at the forefront of innovation and sustainability when it comes to renewable energy sources. Harnessing the power of the sun to generate electricity is an eco-friendly solution with significant ...

[Free Quote](#)

### [How many watts per square meter is a solar panel? . NenPower](#)

1. The average power output of a solar panel is approximately 150 to 400 watts per square meter, depending on various factors including the technology used and ...

[Free Quote](#)



### [Solar Power per Square Meter Calculator](#)

The amount of sunlight received per square meter on the solar panels determines the output you will receive from the solar panel system. So, if you are planning to get a solar ...

[Free Quote](#)



### [How to Calculate Solar Power per Square Meter](#)

Solar power per square meter refers to the amount of solar energy that can be harnessed by a solar panel over a specific area, typically expressed in watts per square meter ...

[Free Quote](#)



### [Solar Power per Square Meter Calculator](#)

Solar panels have become a popular and viable renewable energy source. Solar panels can convert sunlight into electricity by harnessing the power of the sun's rays, making ...

[Free Quote](#)

### [Solar Panel Power Per Square Meter: How to Calculate ...](#)

Final Words Calculating the solar panel power per square meter is an essential step in understanding the efficiency and potential of solar energy systems. By considering factors ...

[Free Quote](#)



## Contact Us

For catalog requests, pricing, or partnerships, please visit:  
<https://getonco.co.za>



## Scan QR Code for More Information



<https://getonco.co.za>