

How many watts does a 1m² solar panel have





Overview

What is solar panel watts per square meter (W/M)?

Solar panel watts per square meter (W/m) measures the power output of a solar panel based on its size. Compare solar panels to see which generates most electricity per square meter. A higher W/m value means a solar panel produces more power from a given area. This can help you determine how many solar panels you need for your energy needs.

How do you calculate solar panel output in watts per square meter?

The formula to calculate the solar panel output and how much energy solar panels produce (in watts) using watts per square meter is as follows: Solar Panel Output (W) = Watts per Square Meter (W/m²) × Area of Solar Panel (m²).

How much energy does a solar panel produce per square meter?

Given Egypt's high solar irradiance levels, which can reach up to 2200 kWh/m² annually, the potential power output per square meter of a solar panel can be quite significant. For a solar panel with an efficiency of 18%, this translates to an annual energy production of about 396 kWh/m². 1. Choosing the Right Panel.

How many watts can a solar panel generate?

This means that for every square meter of this solar panel, you can generate 180 watts of power under optimal conditions. Panel Orientation and Tilt: The angle at which the panel is installed can significantly affect its efficiency. Solar panels should be oriented to face the sun as directly as possible throughout the day.



How many watts does a 1m2 solar panel have



[How many watts per square meter is a solar panel? , NenPower](#)

1. The average power output of a solar panel is approximately 150 to 400 watts per square meter, depending on various factors including the technology used and ...

[Free Quote](#)



[Solar Panel Wattage Explained: How Many ...](#)

Confused about solar panel wattage? Learn how many watts you need, how solar output works, and how to calculate the right solar setup for your home, RV, or cabin.

[Free Quote](#)



[Solar Power per Square Meter Calculator](#)

Solar Panel Output CalculatorSolar Panels Kwh CalculatorSolar Panel Area Per KwWattage is the output of solar panelsthat is calculated by multiplying the volts by amps. Here, the amount of the force of the electricity is represented by volts. The aggregate amount of energy used is expressed in amps (amperes). Output ratings on most solar panels range between 250 watts to 400 watts.See more on energytheory cgprotection

How Much Electricity Can 1 Square Meter of Solar Panels

...

The Basics of Solar Panel Energy Output Let's cut through the solar jargon - when we talk about



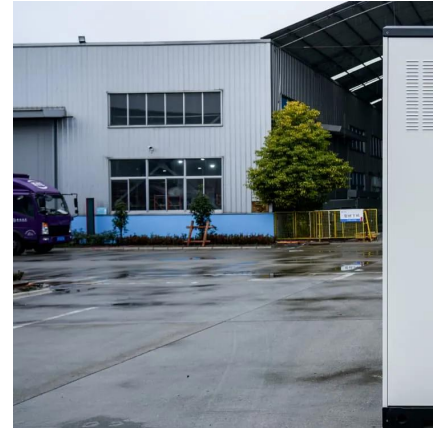
solar panel productivity, we're essentially measuring how well these silicon rectangles turn ...

[Free Quote](#)

[Solar Panel Power Per Square Meter: How to Calculate ...](#)

explore essentials of calculating solar panel power per square meter, including the factors that influence efficiency and how to make the most of your solar investment.

[Free Quote](#)



[Solar Panel Wattage Explained: How Many Watts Do You ...](#)

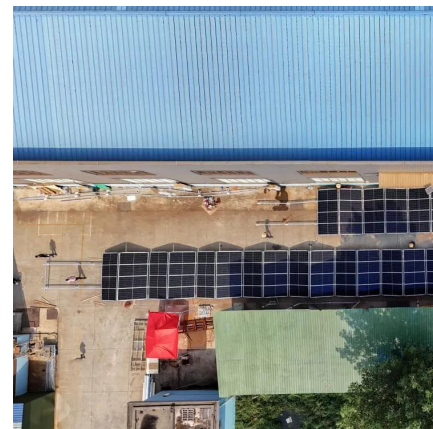
Confused about solar panel wattage? Learn how many watts you need, how solar output works, and how to calculate the right solar setup for your home, RV, or cabin.

[Free Quote](#)

[Solar Panel Power Per Square Meter: How to ...](#)

explore essentials of calculating solar panel power per square meter, including the factors that influence efficiency and how to make the most of your solar investment.

[Free Quote](#)



[How Much Electricity Can 1 Square Meter of Solar Panels ...](#)

The Basics of Solar Panel Energy Output Let's cut through the solar jargon - when we talk about solar panel productivity, we're essentially measuring how well these silicon rectangles turn ...

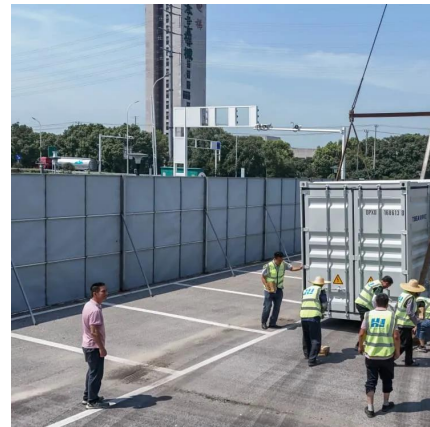


[Free Quote](#)

How many W is one square meter of photovoltaic solar panel?

Solar energy harvesting through photovoltaic (PV) panels converts sunlight directly into electrical energy, which has become a widely adopted renewable energy source in various ...

[Free Quote](#)



How many watts per square meter is a solar ...

1. The average power output of a solar panel is approximately 150 to 400 watts per square meter, depending on various factors including the technology used and ...

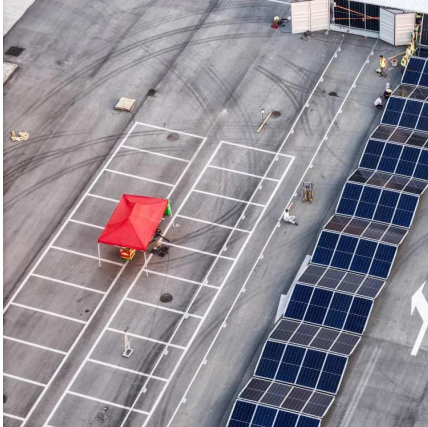
[Free Quote](#)

Solar Energy Generation Per Square Metre: A ...

With the rising demand for renewable energy, solar panels for home have become a popular choice for homeowners looking to reduce electricity bills and contribute to a sustainable future. But before making ...

[Free Quote](#)





[Solar Energy Generation Per Square Metre: A Complete Guide](#)

With the rising demand for renewable energy, solar panels for home have become a popular choice for homeowners looking to reduce electricity bills and contribute to a ...

[Free Quote](#)

Contact Us

For catalog requests, pricing, or partnerships, please visit:
<https://getonco.co.za>

Scan QR Code for More Information



<https://getonco.co.za>