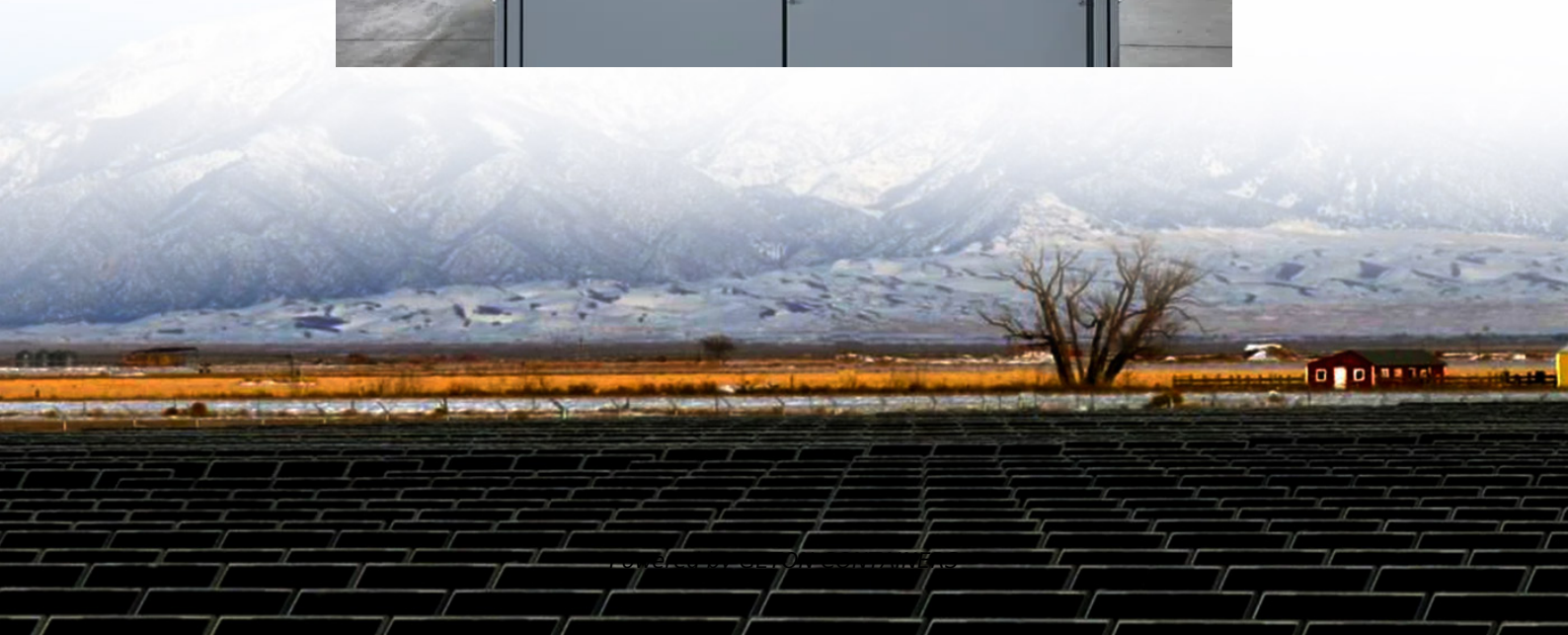


How many square meters does a 1kw solar module have





Overview

How big is a 1kW solar panel?

Typically, panels range from 300W to 350W each. Knowing the size of a 1kW solar panel in terms of energy generation and dimensions is crucial. Each panel has an area of about 1.6–1.8 square meters, thereby implying that the area required for 1kW solar panel amounts to nearly 80–100 square feet for a 1-kW solar system.

How many square meters is a kilowatt solar panel system?

The area required for each kilowatt (kW) solar panel system is approximately 5 to 10 square meters, depending on the panel efficiency and wattage. 1. The effici.

How many square feet is a 1kW Solar System?

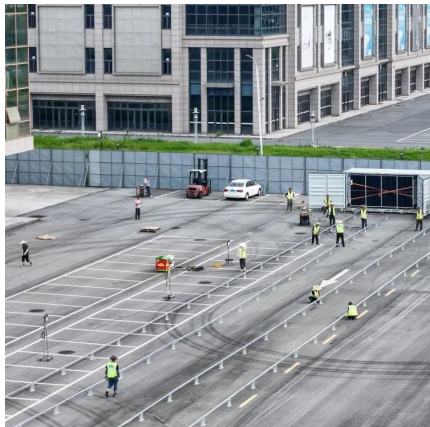
Each panel has an area of about 1.6–1.8 square meters, thereby implying that the area required for 1kW solar panel amounts to nearly 80–100 square feet for a 1-kW solar system. This measurement assumes the panels are installed at an accurate tilt and spacing value. 4. Cost Factor of the Solar System Set-Up:.

How much space does a kilowatt solar panel system need?

The area required for each kilowatt (kW) solar panel system is approximately 5 to 10 square meters, depending on the panel efficiency and wattage. 1. The efficiency of the solar panels influences the space needed significantly, with higher efficiency panels requiring less area per unit of power generated. 2.



How many square meters does a 1kw solar module have



[How much area is required for 1kw solar panel?](#)

The size of a solar panel is measured in watts, and a 1kw solar panel is equivalent to 1000 watts. The physical size of a solar panel can vary depending on the manufacturer and ...

[Free Quote](#)

[How many square meters of photovoltaic panels are 1kw](#)

How many square meters of photovoltaic panels are 1kw Big solar panel system: 1kW, 4kW, 5kW, 10kW system. These include several solar panels connected together in a system (2 - 50 solar ...

[Free Quote](#)



[How many square meters of solar panels are ...](#)

Monocrystalline panels typically exhibit higher efficiency rates, often ranging from 15% to 22%, which enables greater energy yield per square meter. If solar panels are highly efficient, fewer square meters are ...

[Free Quote](#)

[How many square meters are needed to install 1 kW of solar ...](#)

News How many square meters are needed to install 1 kW of solar power? 01/02/2025 Have you ever wondered how many square meters of space is needed to install 1 ...





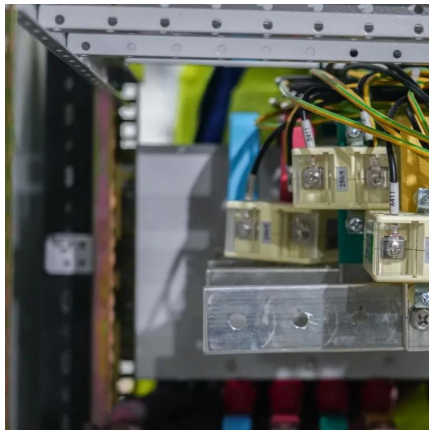
[Free Quote](#)



[How Many m² Are Needed for 1 kW of Solar Panels?](#)

With the right panel selection, the watt value per square meter can be raised to the most efficient level. Specifically in Türkiye, How Much Area Does a 10 kW PV System ...

[Free Quote](#)



[How Much Area Required for 1kW Solar Plant?](#)

Each panel has an area of about 1.6-1.8 square meters, thereby implying that the area required for 1kW solar panel amounts to nearly 80-100 square feet for a 1-kW solar system.

[Free Quote](#)



[How many square meters are needed to ...](#)

News How many square meters are needed to install 1 kW of solar power? 01/02/2025 Have you ever wondered how many square meters of space is needed to install 1 kW of solar power? This is a common ...

[Free Quote](#)





How many square meters of space is required per kw solar ...

For calculations, if one assumes an average solar panel size of 1.6 square meters for a 300W panel, the calculations will reveal that around 3.3 panels would be necessary to ...

[Free Quote](#)



What is the Area of a 1 kW Solar Panel?

To calculate the area required for a solar panel with a 1 kW power output, we need to consider its efficiency rate. For example, if we have a 1 kW solar panel with an efficiency ...

[Free Quote](#)

How many square meters of space is required ...

For calculations, if one assumes an average solar panel size of 1.6 square meters for a 300W panel, the calculations will reveal that around 3.3 panels would be necessary to generate 1 kW of energy. This ...

[Free Quote](#)



How many square meters of solar panels are needed for 1kw?

Monocrystalline panels typically exhibit higher efficiency rates, often ranging from 15% to 22%, which enables greater energy yield per square meter. If solar panels are highly ...

[Free Quote](#)



Contact Us

For catalog requests, pricing, or partnerships, please visit:
<https://getonco.co.za>

Scan QR Code for More Information



<https://getonco.co.za>