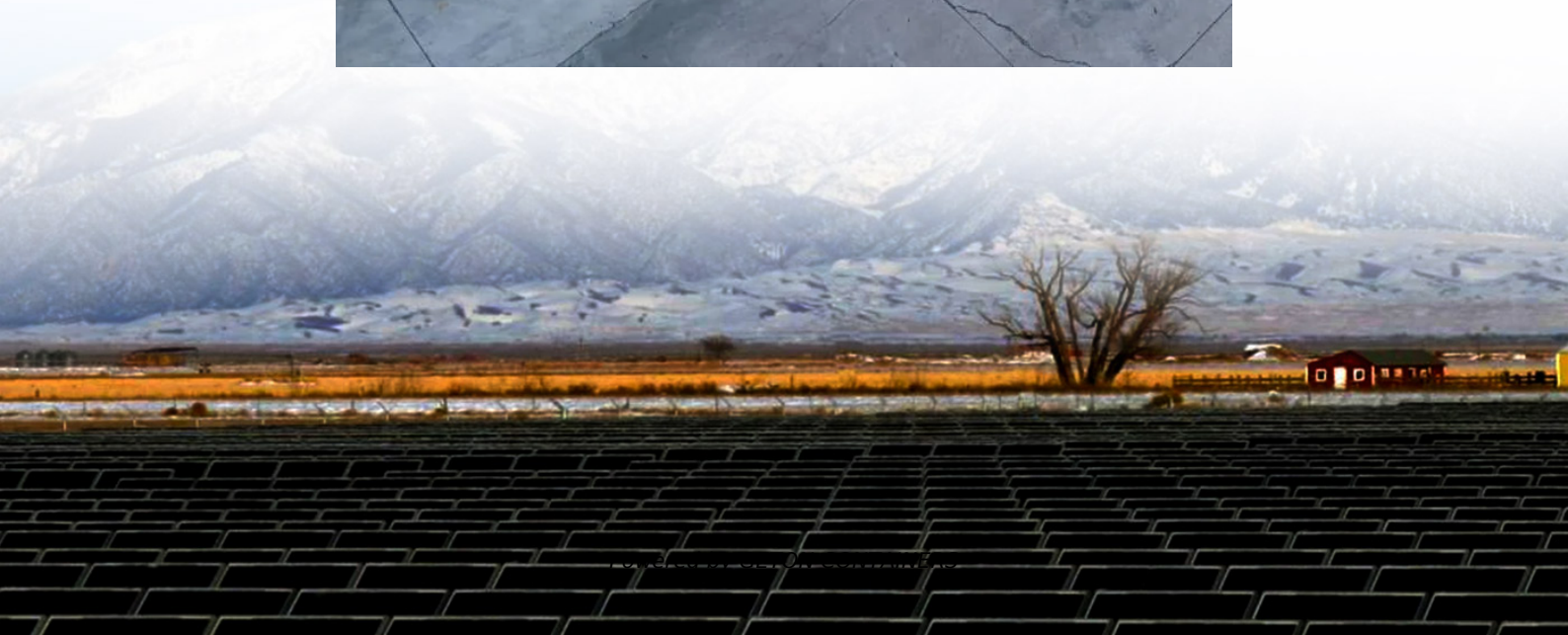


# **How big of an inverter is suitable for a 24v battery**





## Overview

---

What is the recommended battery size for an inverter?

Interpreting Results: Once you input the required data, the calculator will generate the recommended battery size in ampere-hours (Ah). For instance, if your power consumption is 500 watts, the usage time is 4 hours, and the inverter efficiency is 90%, the calculator might suggest a battery size of approximately 222 Ah.

What voltage should a 12V inverter run on?

The input voltage of the inverter should match the battery voltage. (For example 12v battery for 12v inverter, 24v battery for 24v inverter and 48v battery for 48v inverter Summary What Will An Inverter Run & For How Long?

.

What size inverter for a 12V 200Ah battery?

For a 12V 200Ah battery (2.4kWh), a 2000W inverter is ideal. Formula:  $\text{Inverter Wattage} \leq (\text{Battery Voltage} \times \text{Ah Rating} \times 0.8)$ . Factor in surge power needs but prioritize sustained loads. Always check the battery's max discharge rate (C-rate) to avoid exceeding safe limits. When sizing for 24V or 48V systems, recalculate using the higher voltage.

Why should you use the calculate battery size for inverter calculator?

Using the Calculate Battery Size for Inverter Calculator can significantly streamline your power management process. This tool is particularly beneficial in scenarios where precise power estimation is critical, such as designing renewable energy systems, ensuring backup power in off-grid locations, or optimizing battery usage for cost efficiency.



## How big of an inverter is suitable for a 24v battery

---



### [What Size of Inverter Is Good for a 200Ah Battery?](#)

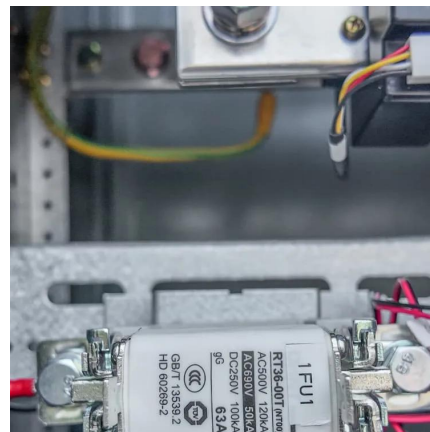
The best inverter size for a 200Ah battery depends on the system voltage and your power needs. A 12V 200Ah battery typically pairs well with a 1000W-2000W inverter, while a 24V setup can ...

[Free Quote](#)

### [Calculate Battery Size For Any Size Inverter \(Using Our ...](#)

To recharge your battery from time to time you would need the right size solar panel to do the job! Read the below article to find out the suitable solar panel size for your battery ...

[Free Quote](#)



### [Can an Inverter Be Too Big for Your Battery System?](#)

Always check the battery's max discharge rate (C-rate) to avoid exceeding safe limits. When sizing for 24V or 48V systems, recalculate using the higher voltage. A 48V 100Ah lithium ...

[Free Quote](#)



### [The Only Inverter Size Chart You'll Ever Need](#)

We created a comprehensive inverter size chart to help you select the correct inverter to power your appliances. The need for an inverter size chart first became apparent ...

[Free Quote](#)

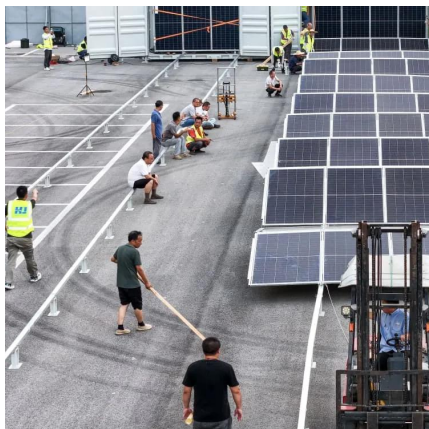




### [Inverter Capacity Calculator](#)

The inverter capacity calculator helps you find the right inverter size for your home or office. It calculates how much power your devices need, how big the inverter should be, and ...

### [Free Quote](#)



### [Calculate Battery Size For Any Size Inverter \(Using Our ...](#)

An inverter can indeed be too big for your battery bank. An oversized inverter might waste energy and raise operating costs. To prevent this, ensure the inverter size matches your ...

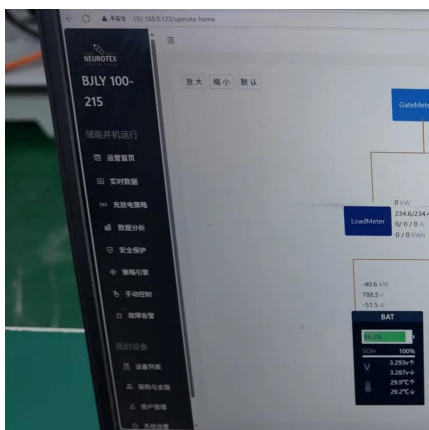
### [Free Quote](#)



### [Calculate Battery Size for Inverter Calculator](#)

The Calculate Battery Size for Inverter Calculator helps you determine the optimal battery capacity needed to support your inverter system. By inputting critical parameters such ...

### [Free Quote](#)



### [What Size Inverter Can I Run Off a 200Ah ...](#)



You can run an inverter rated between 1500W and 2400W off a 200Ah lithium battery depending on voltage and usage. Typically, a 12V 200Ah battery supports up to about 2400W, while higher voltage ...

[Free Quote](#)



[What Size Inverter Can I Run Off a 200Ah Lithium Battery?](#)

You can run an inverter rated between 1500W and 2400W off a 200Ah lithium battery depending on voltage and usage. Typically, a 12V 200Ah battery supports up to about ...

[Free Quote](#)



[What Size Inverter Should I Use for My 24V, 206Ah Battery ....](#)

A 2-3kW inverter is pretty standard for a 24V system. Just keep in mind that you don't want to pull over 100A from your battery if you can avoid it, as that can lead to higher ...

[Free Quote](#)



**Inverter Sizing: Can Your Inverter Be Too Big For Your Battery ...**

An inverter can indeed be too big for your battery bank. An oversized inverter might waste energy and raise operating costs. To prevent this, ensure the inverter size matches your ...

[Free Quote](#)



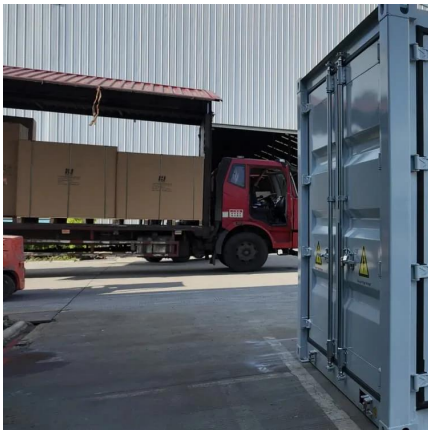
**Determining the Solar and Inverter Size Needed to**



## Charge a Battery

Why Getting the Right Size Matters for Your Battery Charging Setup Efficiency and Performance Selecting the appropriate Size of your solar panels and inverter affects the speed ...

[Free Quote](#)



[Determining the Solar and Inverter Size ...](#)

Why Getting the Right Size Matters for Your Battery Charging Setup Efficiency and Performance Selecting the appropriate Size of your solar panels and inverter affects the speed and completeness of charging. ...

[Free Quote](#)

## Contact Us

For catalog requests, pricing, or partnerships, please visit:  
<https://getonco.co.za>

**Scan QR Code for More Information**



<https://getonco.co.za>