

# **How big a motor can a 48v inverter 5000w drive**





## Overview

---

How long can a 5000 watt inverter run?

A 5000 watts, 48V inverter can run for 6 hours when the power load factor is 0.8 and the volt-ampere is 130 amperes. The battery must provide a minimum of 130 amperes in this case. A 5000W inverter could generate sufficient energy to power more than 5 household types of equipment without an additional power supply.

What is a 5000 watt power inverter?

[5000 Watt Inverter] Power inverters for vehicles provides 5000W continuous and 10000W peak DC 12 Volts to 110 Volts AC power, with 2 2Ausb port and 4 AC outlets, to charge your multiple electronic devices on the go. Power inverter is perfect for vacations, road trips, camping, etc.

How many appliances can a 5000W inverter power?

A 5000W inverter can power more than 5 household appliances without an additional power supply. However, some appliances may require more power, so you may need to disconnect some appliances while using others and then connect the required equipment to start.

How much energy does a 5000-watt inverter draw?

A 5000-watt inverter could draw about five amps of energy. The DC to AC power inverter is an efficient way to convert energy to a useful power source. Several external factors may cause the loss of energy and the overall performance of the inverter.



## How big a motor can a 48v inverter 5000w drive

---



### [What Size Battery Is Required for a 5000 Watt Inverter?](#)

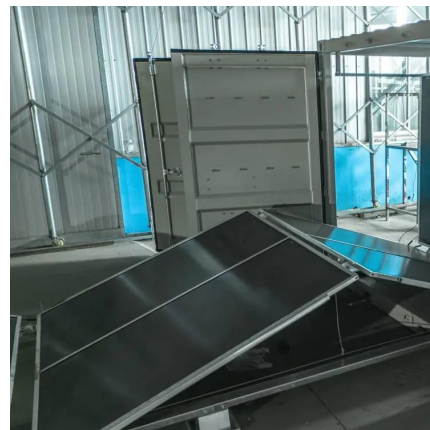
Discover the battery size you need to keep a 5000 watt inverter running smoothly--easy math, clear steps, and pro tips for homes, RVs, and solar setups.

[Free Quote](#)

### [What Can You Power with a 5000 Watt Inverter Power System?](#)

A 5000 watt pure sine wave inverter can power several appliances and systems while the total within 5000W continuous rating. Below are three use-case scenarios for ...

[Free Quote](#)



### [How big a motor can a 48v inverter 5000w drive](#)

Number of Lithium Batteries to Supply a 5kW Inverter - PowMr The capacity of an inverter is measured in watts (or kilowatts). A 5000W inverter with a rated power of 5 kilowatts refers to ...

[Free Quote](#)

### [What Devices Can A 5000 Watt Inverter Run?](#)

A 5000-watt inverter can power heavy-duty appliances like central AC units (3-5 tons), commercial kitchen equipment, and high-demand tools (e.g., welders or table saws). It



supports ...

[Free Quote](#)



### [What Can You Power with a 5000 Watt ...](#)

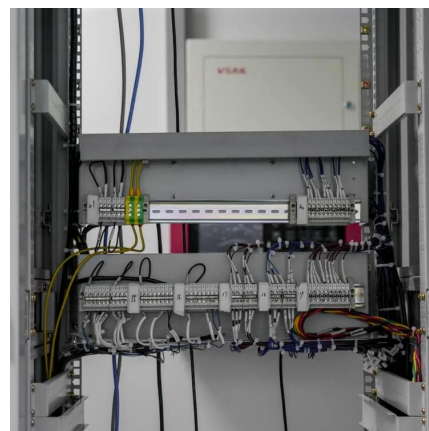
A 5000 watt pure sine wave inverter can power several appliances and systems while the total within 5000W continuous rating. Below are three use-case scenarios for deploying such an inverter system.

[Free Quote](#)

### [How Does a 5000W 48V All-In-One Pure Sine Wave Inverter ...](#)

A 5000W 48V all-in-one pure sine wave inverter converts DC power from batteries/solar panels into stable 120V/240V AC electricity. It integrates an inverter, charger, ...

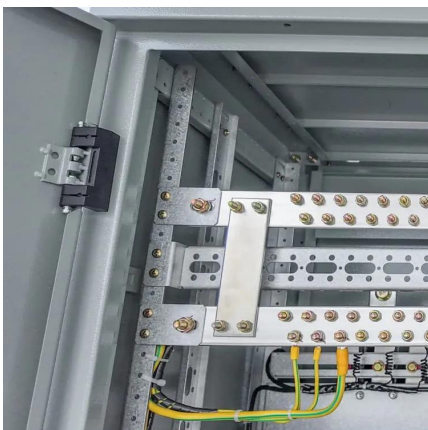
[Free Quote](#)



### [5000w 48v 220v 50hz ac motor drive frequency inverter](#)

4000w 5000w 6000w 2. NEW functions: RS232 port Charge current adjustable ac motor drive frequency inverter 3. DC voltage: 12V DC, 24V DC, 48V DC 4. Battery charger built in: 35 ...

[Free Quote](#)



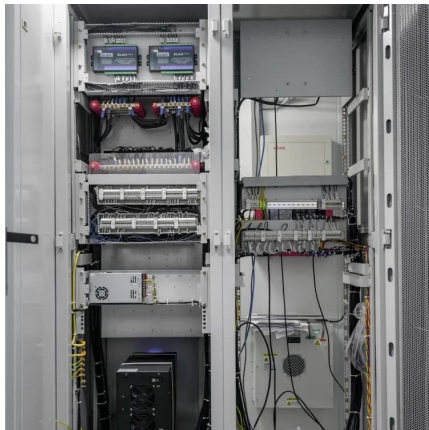
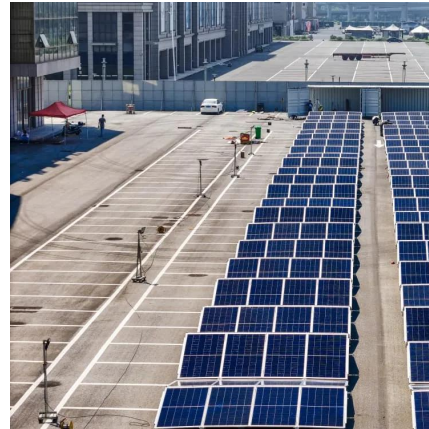




## What is the maximum continuous output power of the Inverter 48v 220v 5000w?

The Inverter 48v 220v 5000w can typically supply the rated continuous output power to resistive loads without many issues. On the other hand, inductive loads, like motors and transformers, ...

[Free Quote](#)



## [What Can a 5000 Watt Inverter Run? , Complete Guide for ...](#)

Discover what a 5000W power inverter can run, including home appliances, tools, and RV systems. Learn about power requirements, surge ratings, and real-world use.

[Free Quote](#)

## [What will a 5000W Inverter Run? Heavy Load](#)

The 5000 watts, 48V inverter may run for 6 hours when the power load factor is 0.8 and volt-ampere is 130 amperes. In this case, the battery must provide a minimum of 130 amperes.

[Free Quote](#)



## [What will a 5000W Inverter Run? Heavy Load](#)

The 5000 watts, 48V inverter may run for 6 hours when the power load factor is 0.8 and volt-ampere is 130 amperes. In this case, the battery must provide a minimum of 130 ...

[Free Quote](#)



### [How Big a Motor Can a 48V 5000W Inverter Drive Power ...](#)

A 48V 5000W inverter can reliably drive motors up to 4.5kW, assuming proper voltage stability and cooling. Always match your motor's startup requirements and operational profile with ...

[Free Quote](#)



## Contact Us

---

For catalog requests, pricing, or partnerships, please visit:  
<https://getonco.co.za>

### Scan QR Code for More Information



<https://getonco.co.za>