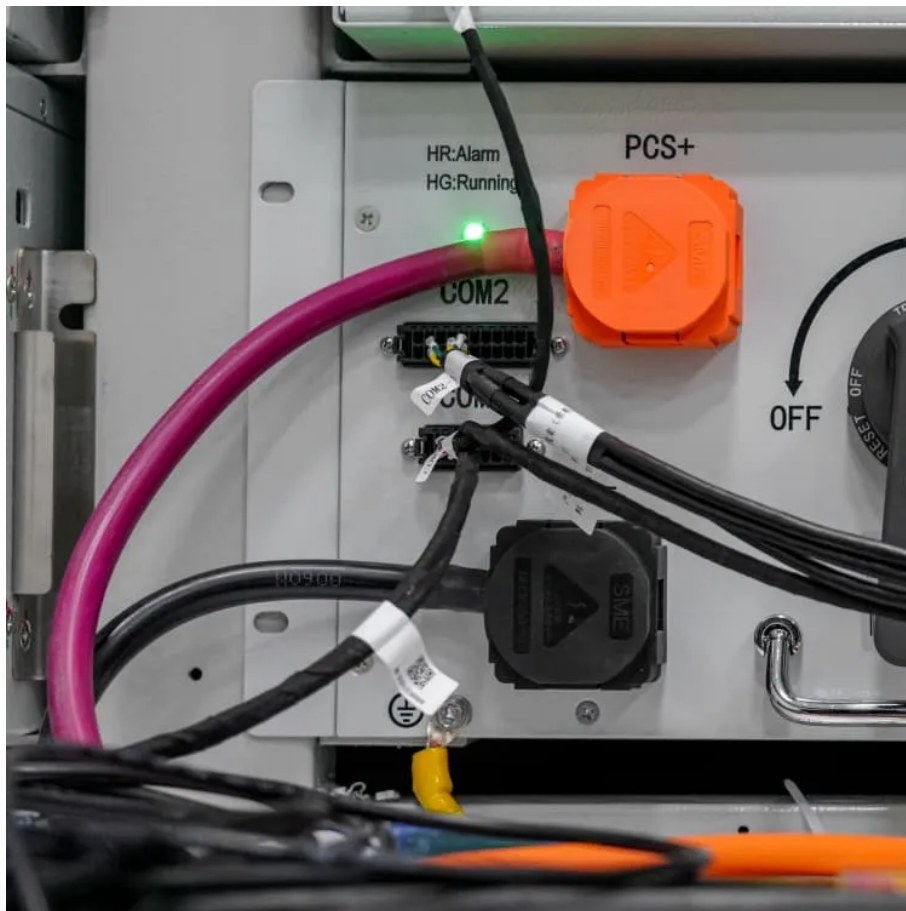


# Field Solar On-site Energy Outdoor





## Overview

---

Can solar cells be tested outdoors?

In most outdoor testing, solar cells are maintained near the maximum power point (MPP) than being in open circuit conditions . There are procedures to conduct outdoor performance of PV modules, which can have two sections; instantaneous and long term performance measurement of PV modules under outdoor conditions.

What is on-site solar?

On-site solar refers to a solar energy system that is installed directly on the property where the energy will be used. This is the most common form of solar energy generation for residential homes and commercial buildings.

Why should you choose on-site solar?

Control Over Energy Production: With on-site solar, you have complete control over your energy production and usage. You can monitor system performance and make adjustments to maximize efficiency. 5. Environmental Impact: On-site solar reduces your carbon footprint by allowing you to generate clean, renewable energy on your own property.

What is off-site solar?

Off-site solar, also known as community solar or solar farms, refers to solar energy systems that are installed at a different location from where the energy will be used. These systems are typically larger, centralized solar farms that generate electricity for multiple homes, businesses, or even entire communities.



## Field Solar On-site Energy Outdoor

---



[The recent advancement of outdoor performance of ...](#)

As a result, it attracted great attention for future solar technology and multiple performance and stability studies have been reported in research articles. This work ...

[Free Quote](#)

### [Outdoor Test Facility and Related Facilities](#)

Our equipment is housed in several laboratories in buildings across NLR, including the OTF, the Field Test Laboratory Building (FTLB), and the Solar Energy Research Facility ...

[Free Quote](#)



### [Outdoor Test Facility and Related Facilities](#)

Our equipment is housed in several laboratories in buildings across NLR, including the OTF, the Field Test Laboratory Building (FTLB), and the Solar Energy Research Facility (SERF). High-Bay Accelerated ...

[Free Quote](#)



### [Perovskite Solar Cells go Outdoors: Field Testing and ...](#)

1. Introduction Perovskite solar cells (PSC) have shown that under laboratory conditions they can compete with established photovoltaic technologies. However, controlled ...



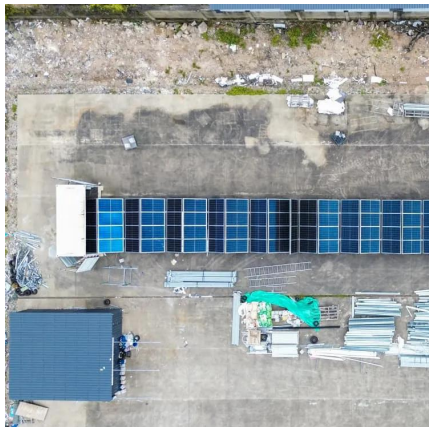
[Free Quote](#)



### [Outdoor PV Module And System Testing ...](#)

As part of the "TruePower Alliance", which was initiated and is driven by SERIS, the institute operates high-precision outdoor testing facilities for PV modules and systems in different climate zones. For energy yield ...

[Free Quote](#)



### [Outdoor PV Module And System Testing Facilities In ...](#)

As part of the "TruePower Alliance", which was initiated and is driven by SERIS, the institute operates high-precision outdoor testing facilities for PV modules and systems in different ...

[Free Quote](#)



### [How Onsite Solar Can Transform Your Energy ...](#)

What is onsite solar? Onsite solar is an asset installed in the same location where the energy generated will be consumed. For each kilowatt-hour (kWh) the onsite solar asset produces, a kWh of ...

[Free Quote](#)







### [Outdoor Efficiency Measurements and Test ...](#)

Test field for solar cell modules on the roof of the Fraunhofer CSP. To be able to measure PV modules under real climate conditions for our customers, we at the Fraunhofer CSP employ various analytical systems which ...

[Free Quote](#)



### [\(PDF\) Perovskite Solar Module Outdoor Field Testing and ...](#)

One of the challenges facing the industrialization of perovskite solar cells (PSCs) is the lack of outdoor field-testing evaluation, especially for large-scale perovskite solar modules.

[Free Quote](#)



### [Effective Solar PV Layout Design for Max Energy Efficiency](#)

Designing an optimal solar PV layout is one of the most critical steps in utility-scale project development. For large, multi-MW or GW-scale projects, even minor design ...

[Free Quote](#)



### [Maximizing the Benefits of On-Site Renewable Energy ...](#)

To achieve sustainability goals while meeting the increasing electricity demands of electrification, organizations are pairing on-site solar PV generation with on-site energy ...

[Free Quote](#)





## [How Onsite Solar Can Transform Your Energy Strategy , Trio](#)

What is onsite solar? Onsite solar is an asset installed in the same location where the energy generated will be consumed. For each kilowatt-hour (kWh) the onsite solar asset ...

[Free Quote](#)



## [\(PDF\) Perovskite Solar Module Outdoor Field ...](#)

One of the challenges facing the industrialization of perovskite solar cells (PSCs) is the lack of outdoor field-testing evaluation, especially for large-scale perovskite solar modules.

[Free Quote](#)



## [On-Site Solar vs. Off-Site Solar: What Are the Differences?](#)

Explore the differences between on-site and off-site solar energy systems, their benefits, costs, and which option suits your home or business needs best.

[Free Quote](#)



## [Outdoor Efficiency Measurements and Test Fields](#)

Test field for solar cell modules on the roof of the Fraunhofer CSP. To be able to measure PV modules under real climate conditions for our customers, we at the Fraunhofer CSP employ ...

[Free Quote](#)



## Contact Us

---

For catalog requests, pricing, or partnerships, please visit:  
<https://getonco.co.za>

### Scan QR Code for More Information



<https://getonco.co.za>