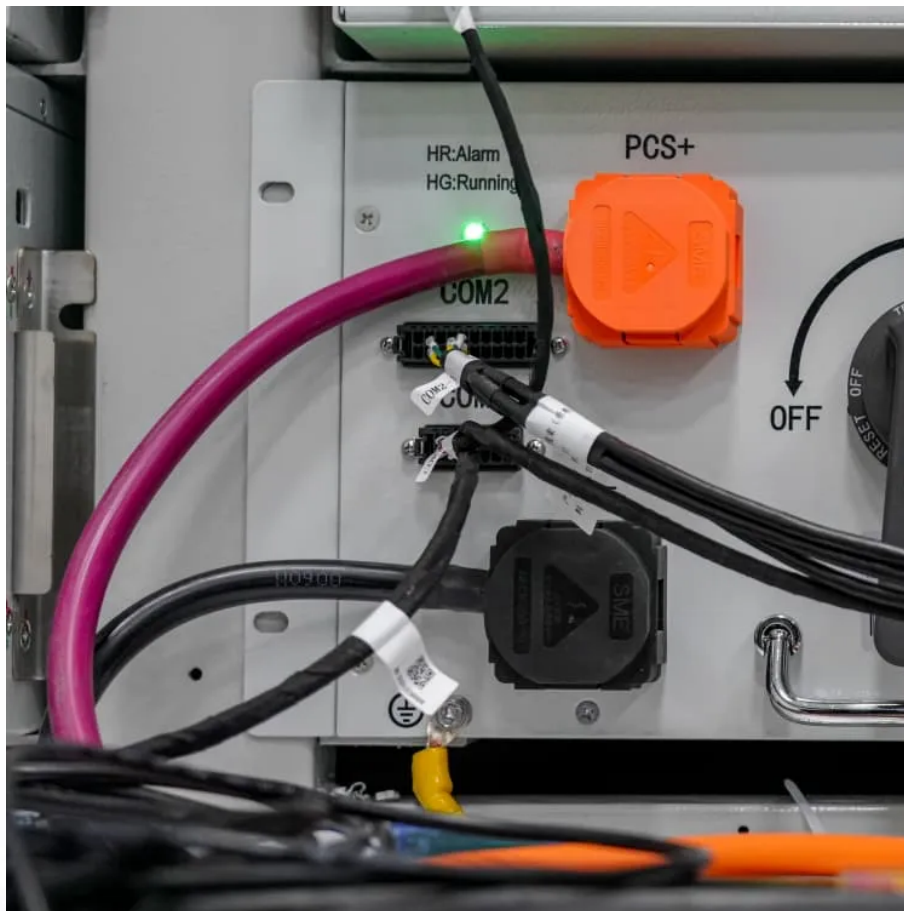


Factory price bus tie breaker in Canberra





Overview

What is a bus tie breaker?

A Bus Tie Breaker is an essential device used in electrical systems to connect or isolate individual sections of a switchboard. In maritime and offshore operations, particularly in vessels equipped with Dynamic Positioning (DP) systems, bus tie breakers play a critical role in ensuring power distribution reliability and flexibility.

What is a tie breaker?

A tie breaker is a type of circuit breaker that connects two sections of an electrical bus serving different power sources. They are commonly used to connect electrical systems to power sources and load circuits, as well as to protect people and equipment from overcurrents. In the context of maintenance, tie breakers offer significant advantages.

How do I create a tie breaker between two buses?

Note: To create a tie breaker between two buses, the buses must be of the same phase and connection type. Only one tie breaker per bus is allowed. However, you can model ring buses or breaker and a half schemes by using a breaker inserted into a short section of busway instead of a tie breaker.

How many bus tie breaker controllers can a Deif power management system include?

A DEIF power management system can include as many Bus tie breaker controllers as necessary. Part of the versatile PPM 300 range The PPM 300 Bus tie breaker controller is part of the DEIF PPM 300 range of versatile controllers with built-in multi-master power management features.



Factory price bus tie breaker in Canberra



[6.6kV Indoor & Outdoor panel](#)

The 6.6kV Indoor VCB Switchgear Panels of voltage range 3.3kV to 11kV and current ratings from 630A to 3150A. For compactness in panels rated up to 2000A special bus raiser panel is ...

[Free Quote](#)



[Bus Tie Breaker: A Key Component in Electrical Power ...](#)

A Bus Tie Breaker is an essential device used in electrical systems to connect or isolate individual sections of a switchboard. In maritime and offshore operations, particularly in vessels ...

[Bus Tie Breaker: A Key Component in Electrical Power ...](#)

A Bus Tie Breaker is an essential device used in electrical systems to connect or isolate individual sections of a switchboard. In maritime and offshore operations, particularly in ...

[Free Quote](#)



[UNDERSTANDING BUS TIE BREAKERS FUNCTIONALITY](#)

Best factory price bus tie breaker Factory What is a bus tie breaker?Some arrangements include a bus tie breaker and others simply utilize switches for the tie between the two buses. Main ...

[Free Quote](#)



[Free Quote](#)



[Understanding Bus Tie Breakers: Functionality ...](#)

Learn about bus tie breakers, their functionality, and how they're used in electrical systems to connect and isolate bus sections, enhance reliability, and facilitate maintenance and repairs.

[Free Quote](#)



[Promoting more robust DP power systems ...](#)

The use of closed bus-ties for dynamic positioning power systems can yield significant benefits for the decarbonization and digitalization of the offshore and shipping sectors. Revised DNV rules ...

[Free Quote](#)



[Understanding Bus Tie Breakers: Functionality And Practical](#)

Learn about bus tie breakers, their functionality, and how they're used in electrical systems to connect and isolate bus sections, enhance reliability, and facilitate maintenance ...

[Free Quote](#)

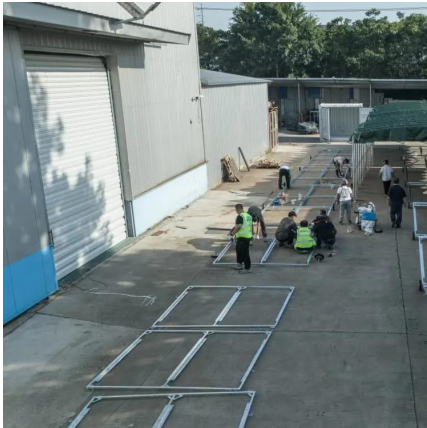
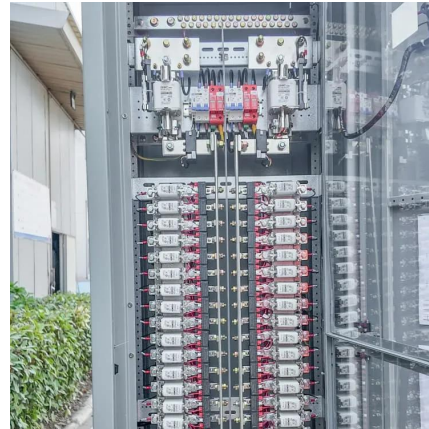




[15KV & 11KV & 12KV & 10KV Bus Tie Switchgear](#)

Top 10KV, 11KV, 12KV & 15KV Bus Tie Switchgear Manufacturers - Reliable, Custom Solutions for Power Distribution. Get Competitive Pricing & Technical Support .

[Free Quote](#)



[Solid-State Bus Tie Breaker Market Research Report 2033](#)

According to our latest research, the global Solid-State Bus Tie Breaker market size in 2024 stands at USD 1.21 billion, driven by the robust adoption of advanced power management ...

[Free Quote](#)

[Bus Tie Breakers and Switches](#)

A bus tie breaker or switch goes between two buses rather than between a bus and a piece of equipment. Click the LV Breaker palette button. Place the breaker by positioning the breaker pointer's top leader ...

[Free Quote](#)



[Promoting more robust DP power systems with closed bus-ties ...](#)

The use of closed bus-ties for dynamic positioning power systems can yield significant benefits for the decarbonization and digitalization of the offshore and shipping ...

[Free Quote](#)



Contact Us

For catalog requests, pricing, or partnerships, please visit:
<https://getonco.co.za>

Scan QR Code for More Information



<https://getonco.co.za>