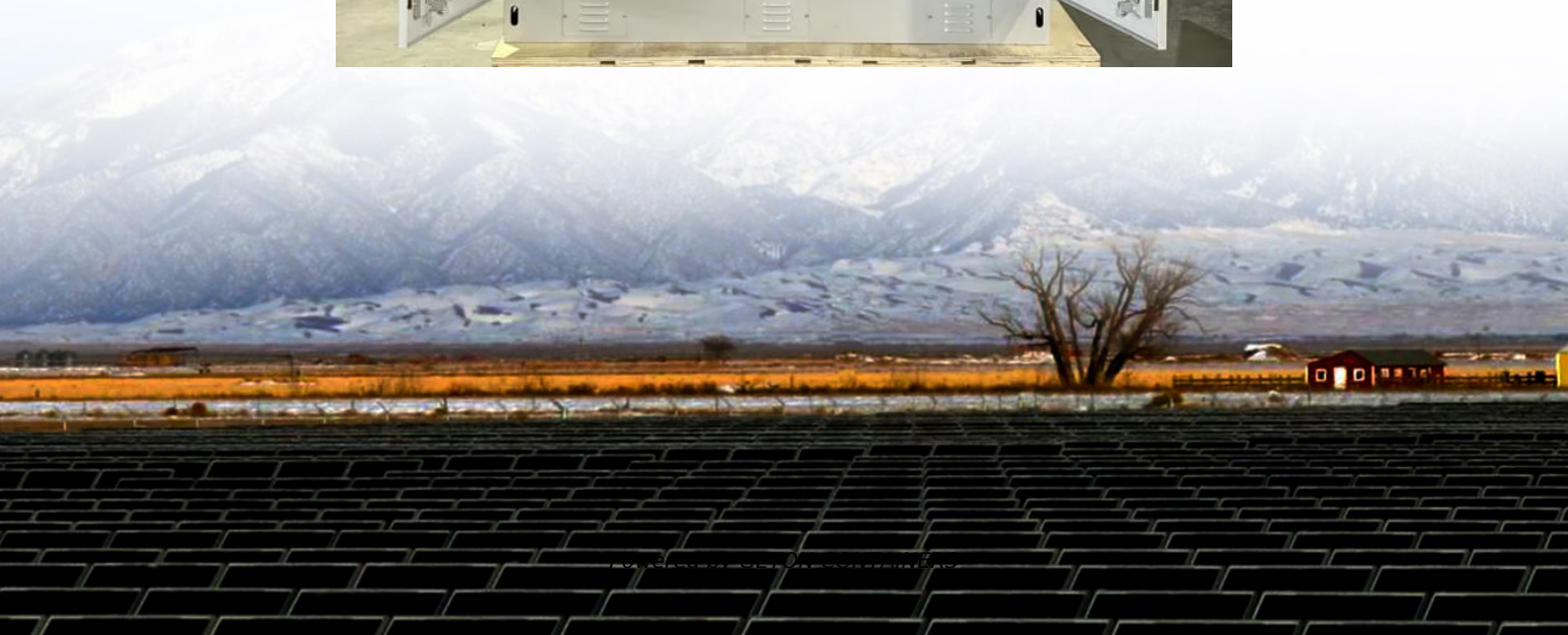


Does solar panel attenuation mean reducing current





Overview

What factors affect the attenuation of solar radiation?

One of the most important factors affecting the attenuation of solar radiation reaching the earth's surface under cloudless sky conditions is the presence of aerosol particles. A direct measurement of the aerosol transmittance is not possible due to the strong influence of the other atmospheric components.

What happens when a solar panel gets shaded?

When one gets in shade it stops pushing current through it, since they are in series this drops the total current. These modules sit between the solar panel and the series chain. They monitor each individual panel and bypass the current past it when it gets shaded.

Why do solar panels have a Zenner diode?

This happens because solar panels are simply current sources with a zenner diode in parallel. When one gets in shade it stops pushing current through it, since they are in series this drops the total current. These modules sit between the solar panel and the series chain.

How do you reduce the effect of partial shading of a panel?

One method of reducing the effect of partial shading of a panel is to place diodes either across a number of substrings or even across each cell. When a cell is shaded the voltage across that cell rises as the voltage from the other cells is presented as an increased potential across the cell "attempting to drive extra current through it".



Does solar panel attenuation mean reducing current



DOES PHOTOVOLTAIC PANEL ATTENUATION MEAN REDUCING

Monocrystalline silicon 660 photovoltaic panel
What are monocrystalline silicon solar panels? Monocrystalline silicon sun-energy panels are more widely used in solar rooftop ...

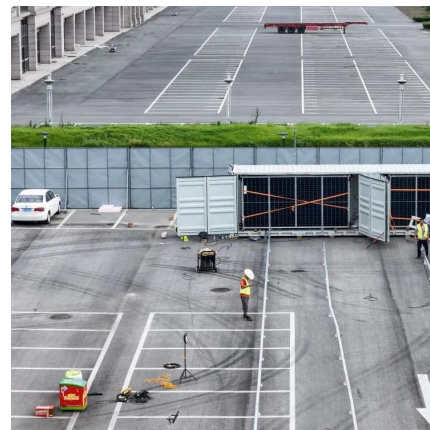
[Free Quote](#)



What is the annual attenuation of solar photovoltaics?

What is the annual attenuation of solar photovoltaics? Annual attenuation of solar photovoltaics refers to the reduction in the efficiency and energy output of solar panels over ...

[Free Quote](#)



DOES PHOTOVOLTAIC PANEL ATTENUATION MEAN REDUCING CURRENT

DOES PHOTOVOLTAIC PANEL ATTENUATION MEAN REDUCING CURRENT. Our certified energy specialists provide round-the-clock monitoring and support for all installed solar energy ...

[Free Quote](#)

What is the attenuation of solar panels?

The above is the annual attenuation of solar panels, which will remain between 80% and 85% after 25 years. This is the attenuation rate promised by LONGI battery cells, ...

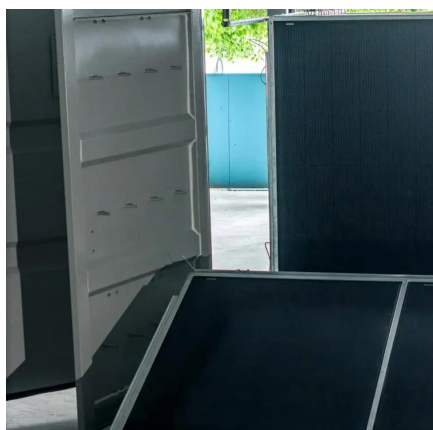
[Free Quote](#)



[Photovoltaic Panel Attenuation Analysis: Why Your Solar ...](#)

The Hidden Cost of Photovoltaic Panel Attenuation Did you know that even a 0.5% annual efficiency drop could erase 12% of your ROI over 25 years? Photovoltaic panel attenuation - ...

[Free Quote](#)



[Does photovoltaic panel attenuation mean reducing current](#)

The Maximum Power Current rating (I_{mp}) on a solar panel indicates the amount of current produced by a solar panel when it's operating at its maximum power output (P_{max}) under ...

[Free Quote](#)



[Does solar panel attenuation mean a reduction in current](#)

These modules sit between the solar panel and the series chain. What does voltage mean on a solar panel? Voltage is like water pressure in a pipe. Just as too much water pressure can ...

[Free Quote](#)

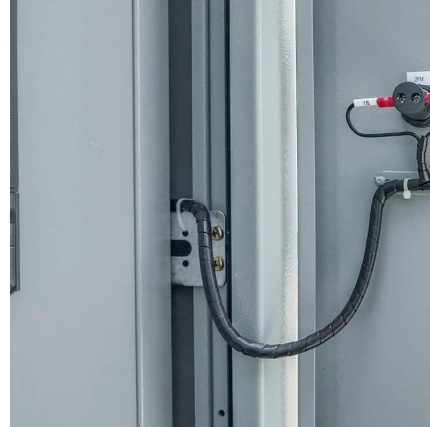




[Why does shading over one solar panel reduce the output of ...](#)

Author Topic: Why does shading over one solar panel reduce the output of the whole string?
(Read 20908 times) 0 Members and 1 Guest are viewing this topic.

[Free Quote](#)



Contact Us

For catalog requests, pricing, or partnerships, please visit:
<https://getonco.co.za>

Scan QR Code for More Information



<https://getonco.co.za>