

Do base station signal towers need power





Overview

What are base stations & cell towers?

These structures facilitate the transmission and reception of signals between mobile devices and the wider network, enabling voice calls, text messages, and data services. Understanding the role and technology behind base stations and cell towers is key to appreciating how mobile networks operate and evolve to meet growing demands. Base Stations.

What is the difference between a base station and a tower?

In summary, the base station is the active component responsible for network communication, while the tower is the physical structure that supports the base station. In summary, base stations are critical for modern telecommunications as they serve as the link between mobile devices and the extensive network infrastructure that spans the globe.

How to choose a base station?

Common frequencies include 900 MHz, 1.8GHz, 2.1GHz, 2.4 GHz, 2.6GHz, 5 GHz and 6 GHz, etc. 3. Power: The base station should have enough power to provide a strong and reliable signal. Higher power can help overcome obstacles and interference. 4. Antenna: The base station should have a high-quality antenna that is suitable for the intended use.

How much power does a cellular base station use?

A cellular base station can use anywhere from 1 to 5 kW power per hour depending upon the number of transceivers attached to the base station, the age of cell towers, and energy needed for air conditioning. Cellular base stations use power without any interruption and also needs maintenance.



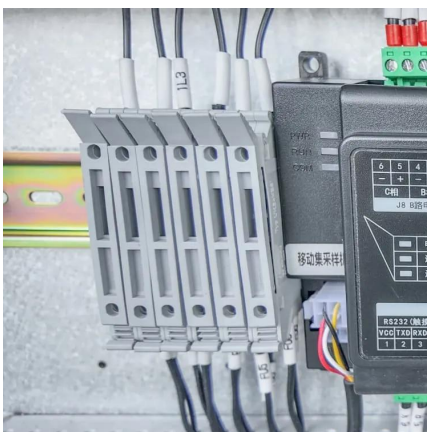
Do base station signal towers need power



[The Road to Robust 5G: A Deep Dive into Base Station Power ...](#)

Traditional "integrated base stations" concentrated all processing and radio frequency (RF) units in an equipment room at the base of the tower, transmitting signals to the antenna on the ...

[Free Quote](#)



[Small Cells, Big Impact: Designing Power Solutions for 5G ...](#)

When a mobile device is close to a small-cell base station, the power needed to transmit the signal is much lower compared to the power needed to transmit a signal from a ...

[Free Quote](#)

What Is A Base Station?

A base station is a piece of equipment that facilitates wireless communication between devices and a network. It contains the necessary hardware and software to transmit and receive signals from devices such ...

[Free Quote](#)



What Is A Base Station?

A base station is a piece of equipment that facilitates wireless communication between devices and a network. It contains the necessary hardware and software to transmit ...

[Free Quote](#)



[Base Stations and Cell Towers: The Pillars of Mobile ...](#)

Base stations and cell towers are critical components of cellular communication systems, serving as the infrastructure that supports seamless mobile connectivity. These ...

[Free Quote](#)



Power Base Station

The transmitter characteristics define RF requirements for the wanted signal transmitted from the UE and base station, but also for the unavoidable unwanted emissions outside the transmitted ...

[Free Quote](#)



[What are Cell Towers and How Do They Work?](#)

How Do Cell Towers Work? A cell tower, also known as a cell site, or a Base Transceiver Station, is a structure that produces a cellular signal as a "cell" in a cellular ...

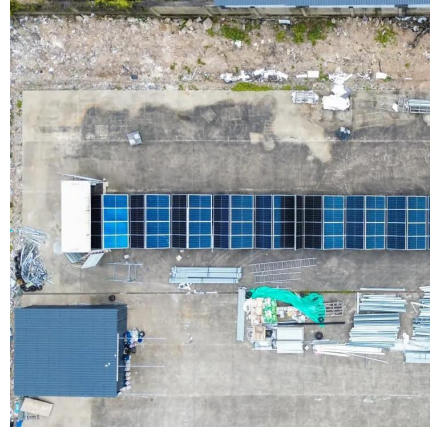
[Free Quote](#)



[What are Cell Towers and How Do They Work?](#)



Everything You Ever Wanted to Know About Cell Towers
How Do Cell Towers Work?What Components Are in A Cell Tower?How Tall Are Cell Phone Towers?How Do Cell Towers Look?How Far Do Cell Towers Reach?Is There Anything Different About 5G Cell Towers?Who Builds Cell Towers?How Can I Find A Cell Tower Near Me?How Can I Connect to The Nearest Tower?A cell tower, also known as a cell site, or a Base Transceiver Station, is a structure that produces a cellular signal as a "cell" in a cellular network. This is accomplished with a myriad of transceivers, digital signal processors, control electronics, primary and backup electrical power, and GPS receivers. They are, at the most basic level, radio See more on wilsonamplifiers Author: Wilson AmplifiersPublished: Apr 24, 2024ScienceDirect



Power Base Station - an overview , ScienceDirect Topics

The transmitter characteristics define RF requirements for the wanted signal transmitted from the UE and base station, but also for the unavoidable unwanted emissions outside the transmitted ...

[Free Quote](#)



Why Do Base Stations Need Energy Storage? The Power Behind Your Signal

Modern base stations aren't just signal towers - they're mini data centers processing self-driving car info and AR filters. This edge computing demands ultra-reliable power.

[Free Quote](#)

EMF

When base stations are located close to users, the transmitter power required by the mobile phone and the base station to communicate is relatively low. If base stations were located ...



[Free Quote](#)



Contact Us

For catalog requests, pricing, or partnerships, please visit:
<https://getonco.co.za>

Scan QR Code for More Information



<https://getonco.co.za>