

Batteries connected in series to inverter





Overview

Should Inverter Batteries be wired in series?

If you decide to wire your inverter batteries in series it will increase the voltage and limit how many you can hook up to your inverter. Many people prefer to connect batteries and inverters in parallel. This is because there is less limitation on how many batteries you can connect to your inverter at once.

How many batteries can I connect to my inverter?

There is no set limit to how many batteries you can connect to your inverter. But you must understand how you connect your batteries together affects what you can and can't do! For example, connecting your batteries in series will be different to connecting in parallel.

How does a series inverter work?

When you connect in series you connect one battery to another connecting the positive to negative terminals between batteries. A bit like people holding hands! Here's a diagram of what it should look like: To add more batteries to an inverter you need to check how your equipment is connected.

Can you connect multiple batteries to an inverter?

Connecting Multiple Batteries to an Inverter For increased power capacity, you can connect multiple batteries to your inverter. In a parallel connection, connect all positive terminals together and all negative terminals together. This setup increases capacity without changing the voltage.



Batteries connected in series to inverter



[How to Connect an Inverter to a Battery: Step ...](#)

Learn how to safely and efficiently connect an inverter to a battery with our step-by-step guide. Includes brand-specific tips for Solis, Deye, Megarevo, SRNE, and more. Perfect for DIY enthusiasts and ...

[Free Quote](#)

[Complete Guide to Wiring Batteries in Series ...](#)

Wiring batteries in series is a common method used in solar power systems, RVs, golf carts, and other DC setups. 12V batteries are the most popular, offering flexibility for configuring direct current systems. This ...

[Free Quote](#)



Advanced Considerations for Connecting Lithium Batteries and Inverters

Series Connection: Increases the total voltage (e.g., four 12V batteries connected in series will provide 48V). Parallel Connection: Increases the overall capacity, allowing the ...

[Free Quote](#)



[Connecting Multiple Batteries to an Inverter: ...](#)

For example, connecting your batteries in series will be different to connecting in parallel. If you decide to wire your inverter batteries in series it will increase the voltage and limit how many you



can hook up to your ...

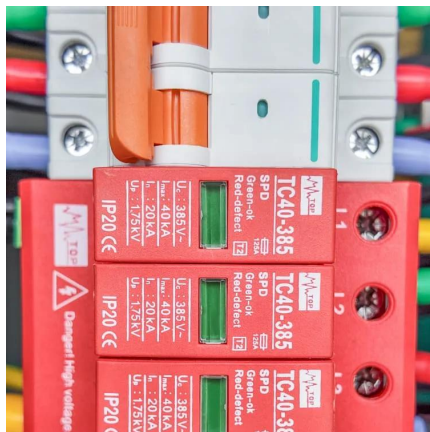
[Free Quote](#)



[Connecting Multiple Batteries to an Inverter: Easy Guide](#)

For example, connecting your batteries in series will be different to connecting in parallel. If you decide to wire your inverter batteries in series it will increase the voltage and limit how many ...

[Free Quote](#)



[How to Safely Connect a Battery to an Inverter: A Step-by ...](#)

Learn how to safely connect your batteries to your inverter with our guide. Avoid common wiring mistakes to optimize performance and extend system life.

[Free Quote](#)



[How to Connect an Inverter to a Battery: Step-by-Step Guide ...](#)

Learn how to safely and efficiently connect an inverter to a battery with our step-by-step guide. Includes brand-specific tips for Solis, Deye, Megarevo, SRNE, and more. Perfect ...

[Free Quote](#)

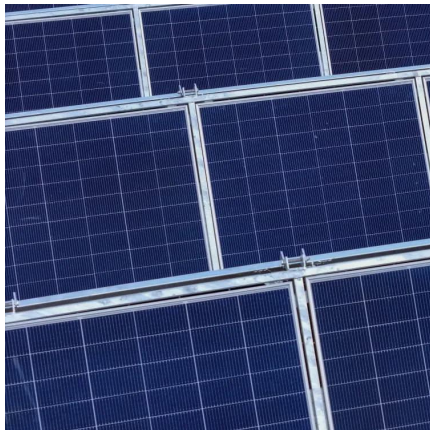




[Battery connection for inverter](#)

An battery connection for inverter is made in a diligent way to achieve proper operation, life span and safety constraint. This article enlightens the features, risks and battery ...

[Free Quote](#)



[Battery connection for inverter](#)

An battery connection for inverter is made in a diligent way to achieve proper operation, life span and safety constraint. This article enlightens the features, risks and battery connection for inverter along ...

[Free Quote](#)

[Can I connect multiple batteries to an inverter?](#)

Can I connect multiple batteries to an inverter?Grace is a Technical Support Engineer at Volyford, providing troubleshooting and technical assistance to customers ...

[Free Quote](#)



[Complete Guide to Wiring Batteries in Series - PowMr](#)

Wiring batteries in series is a common method used in solar power systems, RVs, golf carts, and other DC setups. 12V batteries are the most popular, offering flexibility for ...

[Free Quote](#)



[Can I connect multiple batteries to an ...](#)

Can I connect multiple batteries to an inverter? Grace is a Technical Support Engineer at Volyford, providing troubleshooting and technical assistance to customers regarding our water pumps and related ...

[Free Quote](#)



Contact Us

For catalog requests, pricing, or partnerships, please visit:
<https://getonco.co.za>

Scan QR Code for More Information



<https://getonco.co.za>