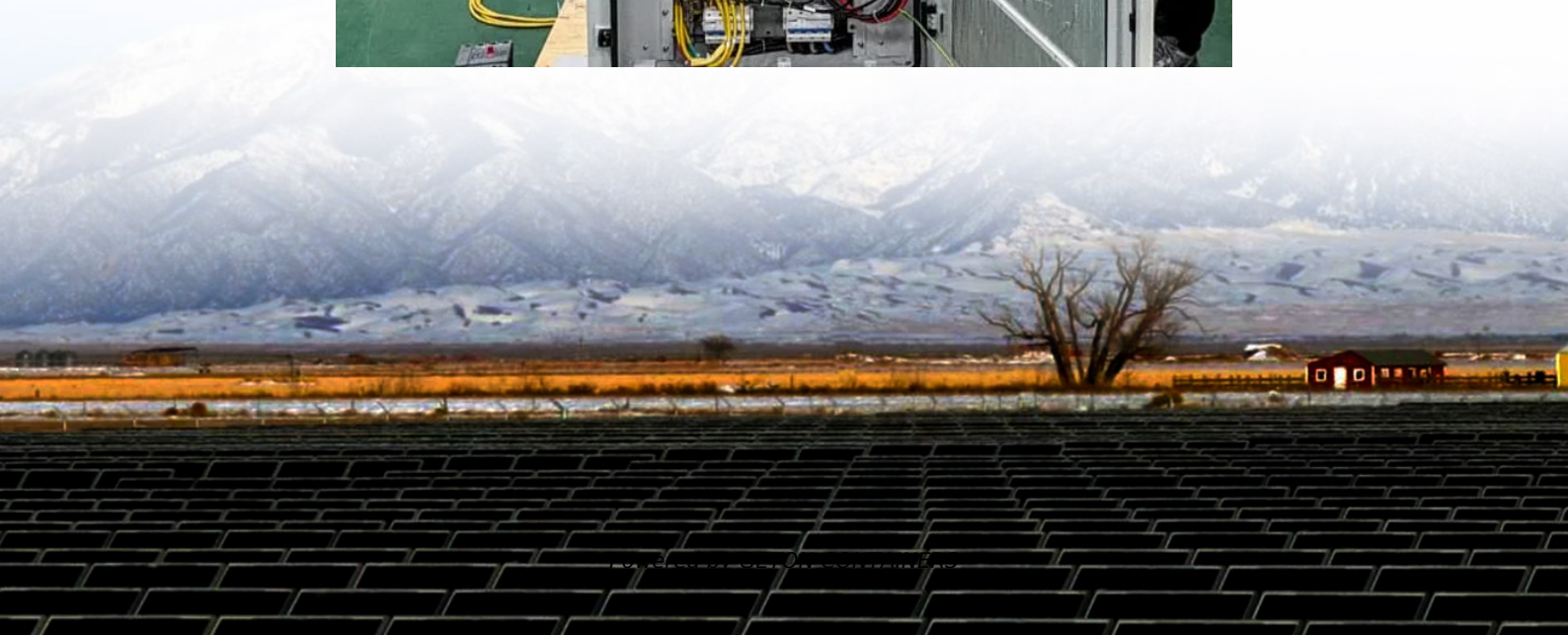


# Base station distribution box installation





## Overview

---

Where should a distribution box be mounted?

Mount the distribution box in a convenient, accessible location that complies with local electrical codes. Typically, this is in a basement, utility room, or garage. Ensure the box is mounted at a comfortable height and securely fastened to the wall studs. Step 4: Connect the Main Power Cable.

Why is it important to install a distribution box correctly?

Installing a distribution box correctly is crucial for several reasons: **Safety:** A properly installed distribution box reduces the risk of electrical fires, short circuits, and electric shocks. **Efficiency:** It ensures that power is evenly distributed throughout the building, preventing overloads and optimizing energy use.

What is a distribution box?

A distribution box is the heart of any electrical system. It takes the incoming power and safely distributes it to different circuits throughout your building. Whether in a home or an industrial facility, this box keeps your electrical setup organized, functional, and efficient.

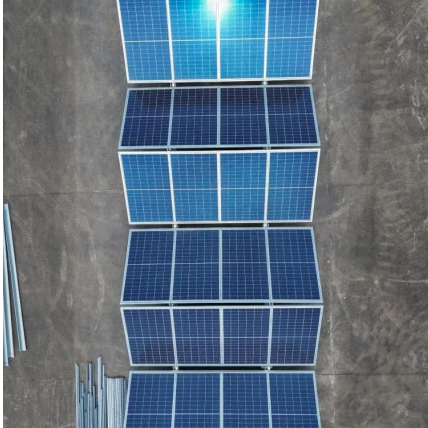
How do I choose a distribution box?

First, think about the type of environment. Residential distribution boxes are usually smaller and built for lighter loads. They're great for homes and small offices. On the other hand, industrial boxes are designed for high-capacity use in places like factories, warehouses, or construction sites. Also, decide between indoor and outdoor use.



## Base station distribution box installation

---



### [Installation steps and precautions for distribution box](#)

1. Preparation before installation Choose installation method: The installation of the distribution box is divided into two types: exposed installation (fixed on the wall) and concealed ...

### [Free Quote](#)

### [How to Install a Cable Distribution Box Safely and Correctly?](#)

In modern electrical systems, cable distribution boxes (also known as electrical distribution boxes or distribution boxes) play a crucial role as the key hub for managing, ...

### [Free Quote](#)



### **How to install a low**

Step 6: Maintenance and Safety Once the low - voltage distribution box is installed and commissioned, regular maintenance is crucial to ensure its continued safe and reliable operation. Inspect the distribution ...

### [Free Quote](#)

### [Small distribution box installation steps](#)

The steps to install a small distribution box include selecting a suitable location, installing the base, placing the distribution box, connecting the wires, and checking for acceptance. Warm reminder: Do not ...





[Free Quote](#)



### Requirements And Specifications For Installation Of Distribution Boxes

The installation of explosion-proof distribution boxes should follow specific explosion-proof grades and material requirements to ensure their safety and reliability.

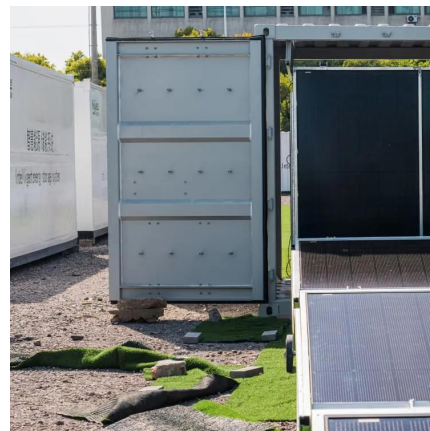
[Free Quote](#)



### [Small distribution box installation steps](#)

The steps to install a small distribution box include selecting a suitable location, installing the base, placing the distribution box, connecting the wires, and checking for ...

[Free Quote](#)



### [Requirements And Specifications For ...](#)

The installation of explosion-proof distribution boxes should follow specific explosion-proof grades and material requirements to ensure their safety and reliability.

[Free Quote](#)





### [Distribution Box Installation: A Complete Guide to Safe and ...](#)

The distribution box, often referred to as a breaker box, fuse box, or electrical panel, is a critical component of any electrical system. It acts as the central hub for distributing ...

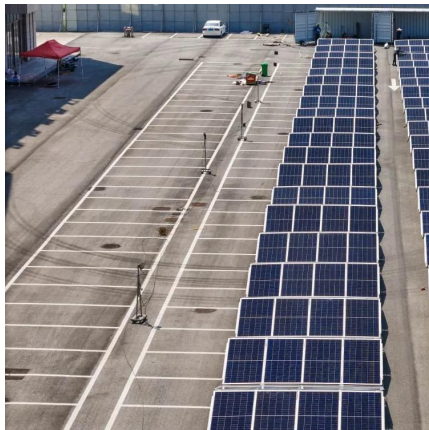
[Free Quote](#)



### [JXF Power Distribution Box \(Cabinet\) User Manual](#)

Installation Diagram Open-mounted distribution box installation method: Assemble four bolts into the four holes on the corners and tighten them into the expansion pipes to fix the ...

[Free Quote](#)



### [The Complete Guide to Distribution Box: Installation. Types ...](#)

What's the difference between a distribution box and a sub-panel? A distribution box typically refers to the main electrical panel that receives power from the utility service. A ...

[Free Quote](#)



### [How to Install a Distribution Box--A Comprehensive ...](#)

What is a Distribution Box? First of all, you need to have a simple understanding of the definition of a distribution box, and make it clear which kind of distribution box you want to ...

[Free Quote](#)





### [Installation steps and precautions for ...](#)

1. Preparation before installation Choose installation method: The installation of the distribution box is divided into two types: exposed installation (fixed on the wall) and concealed installation (embedded in the ...

[Free Quote](#)



## Contact Us

---

For catalog requests, pricing, or partnerships, please visit:  
<https://getonco.co.za>

### Scan QR Code for More Information



<https://getonco.co.za>