

AC inverter watt to 7000 watt





Overview

What can a 5000 watt DC to AC power inverter power?

A 5000 watt dc to ac power inverter can power most standard household electronics with an input level of 42.5 amps.

How many watts does an inverter have?

Features: Specifications: Surge power capability (peak power): 14,000 Watts
The surge duration is electronically controlled and permits up to 9 seconds while the output is between 7000 and 14,000 watts. During this time the buzzer will sound until the inverter electronically shuts down.

What is a utility grade inverter?

Delivering an incredible 7,000 watts of continuous power, this utility-grade inverter was designed to reproduce the quality of electricity provided by power companies to create a stable AC power source. This inverter supplies ample power to run large pumps, compressors, power tools, multiple appliances, job sites and even a small house!



AC inverter watt to 7000 watt



AIMS Power 7000 Watt 48 Volt Industrial Grade Modified Sine Power Inverter

At 7000 watts and up to 14000 watts for 9 seconds, this 48 VDC Industrial Grade Modified Sine Wave Power Inverter is a complete solution for any power need. Click to learn more.

[Free Quote](#)

[Amazon : 7000 Watt Inverter](#)

5000 watt Power Inverter DC 12V to AC 110V/120V Converter, 10000w Peak es with LCD Display, Wireless Controller, 4AC outlets, 1USB. RV Inverter, Suitable for Camping, and Off-Grid ...

[Free Quote](#)



[AIMS Power 7000 Watt 48 VDC to 240 VAC Industrial Power Inverter](#)

Delivering an incredible 7000 watts of continuous power this utility-grade inverter was designed to create a stable AC power source. This inverter supplies ample power to run ...

[Free Quote](#)



[7000 Watt Power Inverter 24Vdc to 240Vac Industrial Grade ...](#)

Delivering an incredible 7000 watts of continuous power this utility-grade inverter was designed to reproduce the quality of electricity provided by power companies to create a ...



[Free Quote](#)



[7000W Inverter Power DC to AC](#)

Types of 7000W Inverter Power (DC to AC) A 7000W inverter plays a crucial role in modern power systems by converting direct current (DC) into alternating current (AC), enabling the use ...

[Free Quote](#)



[7000 Watt 48VDC to 240VAC 50/60hz Industrial Grade Power Inverter](#)

7000 Watt Power Inverter 48VDC to 240VAC 50/60hz Industrial Grade The AIMS Power 7000 watt Industrial Grade power inverter accepts a 48 volt input and produces 240VAC of modified ...

[Free Quote](#)



[AIMS Power 7000 Watt 48 VDC to 240 VAC Industrial Power Inverter](#)

Delivering an incredible 7000 watts of continuous power this utility-grade inverter was designed to create a stable AC power source. This inverter supplies ample power to run large pumps compressors power tools multiple appliances job sites and even a small house!

[Free Quote](#)

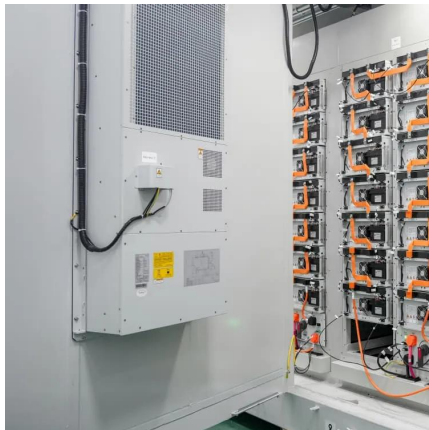




[7000 WATT MODIFIED SINE INVERTER 48 VDC TO 230/240 ...](#)

The AIMS Power 7000 watt Industrial Grade power inverter accepts a 48 volt input and produces 240vac of modified sine wave AC power. With the AIMS industrial grade line, you get a ...

[Free Quote](#)



[7000 Watt 48VDC to 240VAC 50/60hz ...](#)

7000 Watt Power Inverter 48VDC to 240VAC 50/60hz Industrial Grade The AIMS Power 7000 watt Industrial Grade power inverter accepts a 48 volt input and produces 240VAC of modified sine wave AC power. With the ...

[Free Quote](#)

[AIMS Power 7000 Watt 48 Volt Industrial ...](#)

At 7000 watts and up to 14000 watts for 9 seconds, this 48 VDC Industrial Grade Modified Sine Wave Power Inverter is a complete solution for any power need. Click to learn more.

[Free Quote](#)



Contact Us

For catalog requests, pricing, or partnerships, please visit:
<https://getonco.co.za>



Scan QR Code for More Information



<https://getonco.co.za>