

72-type solar panel size





Overview

What are the dimensions of standard solar panels?

Most solar panels are about 1.5 inches thick. The typical classification of solar panel sizes is based on the solar cell size, but it's not very useful for most calculations.

What are the different types of solar panels?

Solar panels are available in several standard sizes, with the most common being 60-cell and 72-cell configurations. These dimensions are based on the number and arrangement of photovoltaic (PV) cells within the panel. 60-cell solar panels are popular for residential installations due to their manageable size and weight.

Which solar panel is better 72 or 60?

72-cell panels produce more power per panel but are larger and heavier. They're better for installations where you want fewer panels, but 60-cell panels are easier to install and more suitable for most residential roofs. How much do solar panels weigh?

.

What are the dimensions of a 96-cell solar panel?

96-cell solar panel size. The dimensions of 96-cell solar panels are 41.5 inches long and 63 inches wide. That's a 41.5x63 solar panel.



72-type solar panel size



72 Cell Solar Module

72 cell solar modules are a type of photovoltaic panel that consists of 72 individual solar cells. These modules are larger in size compared to their counterparts, such as 60 cell or 36 cell ...

[Free Quote](#)



[60-Cell vs 72-Cell Solar Panels](#)

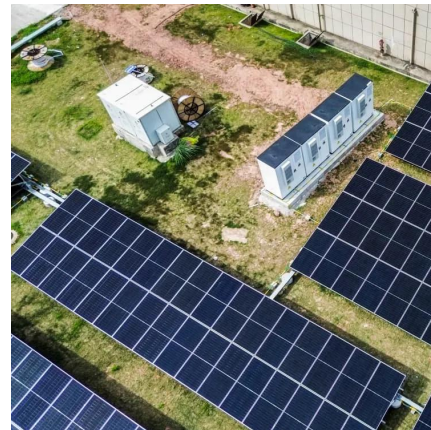
Choosing the right solar panel size is one of the most important decisions when designing a solar energy system. Panel dimensions, power output, cost efficiency, and ...

[Free Quote](#)

[What Are the Common Solar Panel Sizes?](#)

The size of solar panels with the same cell count varies slightly, depending on the brand and model. Still, most 60-cell solar panels have a size of 39" X 66" and most 72-cell ...

[Free Quote](#)



[Solar Photovoltaic Panel Sizing Guide](#)

1. Standards Solar Cells Board size There are two common configurations for traditional solar panels. 60 and 72 cells with corresponding dimensions. 60 Photovoltaic modules. 1.635 m² ...

[Free Quote](#)



[Exploring Solar Panel Technology: 60, 72, and ...](#)

Choosing the right solar panel depends on space availability, energy needs, and budget considerations. Comparing 60, 72, and 96 Cell Solar Panels When it comes to solar panels, one size does not fit all. Each type, ...

[Free Quote](#)



[Standard Solar Panel Sizes And Wattages...](#)

72-cell solar panel size. The dimensions of 72-cell solar panels are as follows: 77 inches long, and 39 inches wide. That's a 77x39 solar panel; basically, a longer panel, mostly used for commercial solar ...

[Free Quote](#)



[Solar Panel Size & Dimensions Guide 2025 , Complete Specs](#)

Complete guide to solar panel sizes and dimensions. Compare 60-cell vs 72-cell panels, weights, roof space requirements, and installation specs for 2025.

[Free Quote](#)



[Understanding the Size of One Solar Panel: A ...](#)



Most panels typically weigh between 40 to 50 pounds, which indicates that the size of one solar panel is roughly 18 kg for a standard 60-cell, 1.7m² panel and around 23.5 kg for a larger 72-cell, 2.3m² module. ...

[Free Quote](#)



[72 Slice PV Panel Component Size](#)

72-cell solar panels have more photovoltaic cells, therefore, they are larger than 60-cell panels. When it comes to dimensions, 60-cell panels are usually built six cells wide and ten ...

[Free Quote](#)



[Understanding the Size of One Solar Panel: A Complete ...](#)

Most panels typically weigh between 40 to 50 pounds, which indicates that the size of one solar panel is roughly 18 kg for a standard 60-cell, 1.7m² panel and around 23.5 kg for a ...

[Free Quote](#)



[Solar Panel Size & Dimensions Guide 2025](#)

Complete guide to solar panel sizes and dimensions. Compare 60-cell vs 72-cell panels, weights, roof space requirements, and installation specs for 2025.

[Free Quote](#)



[standard solar photovoltaic panel sizes explained](#)



Are commercial solar photovoltaic panel sizes different from residential ones? Absolutely--commercial and utility projects often use larger 72-cell or 96-cell solar ...

[Free Quote](#)



[Standard Solar Panel Sizes And Wattages \(100W-500W ...](#)

72-cell solar panel size. The dimensions of 72-cell solar panels are as follows: 77 inches long, and 39 inches wide. That's a 77x39 solar panel; basically, a longer panel, mostly ...

[Free Quote](#)



[60-Cell vs 72-Cell Solar Panels](#)

Choosing the right solar panel size is one of the most important decisions when designing a solar energy system. Panel dimensions, power output, cost efficiency, and installation constraints all play a role in ...

[Free Quote](#)



[Exploring Solar Panel Technology: 60, 72, and 96 Cell Panels ...](#)

Choosing the right solar panel depends on space availability, energy needs, and budget considerations. Comparing 60, 72, and 96 Cell Solar Panels When it comes to solar panels, ...

[Free Quote](#)





Contact Us

For catalog requests, pricing, or partnerships, please visit:
<https://getonco.co.za>

Scan QR Code for More Information



<https://getonco.co.za>