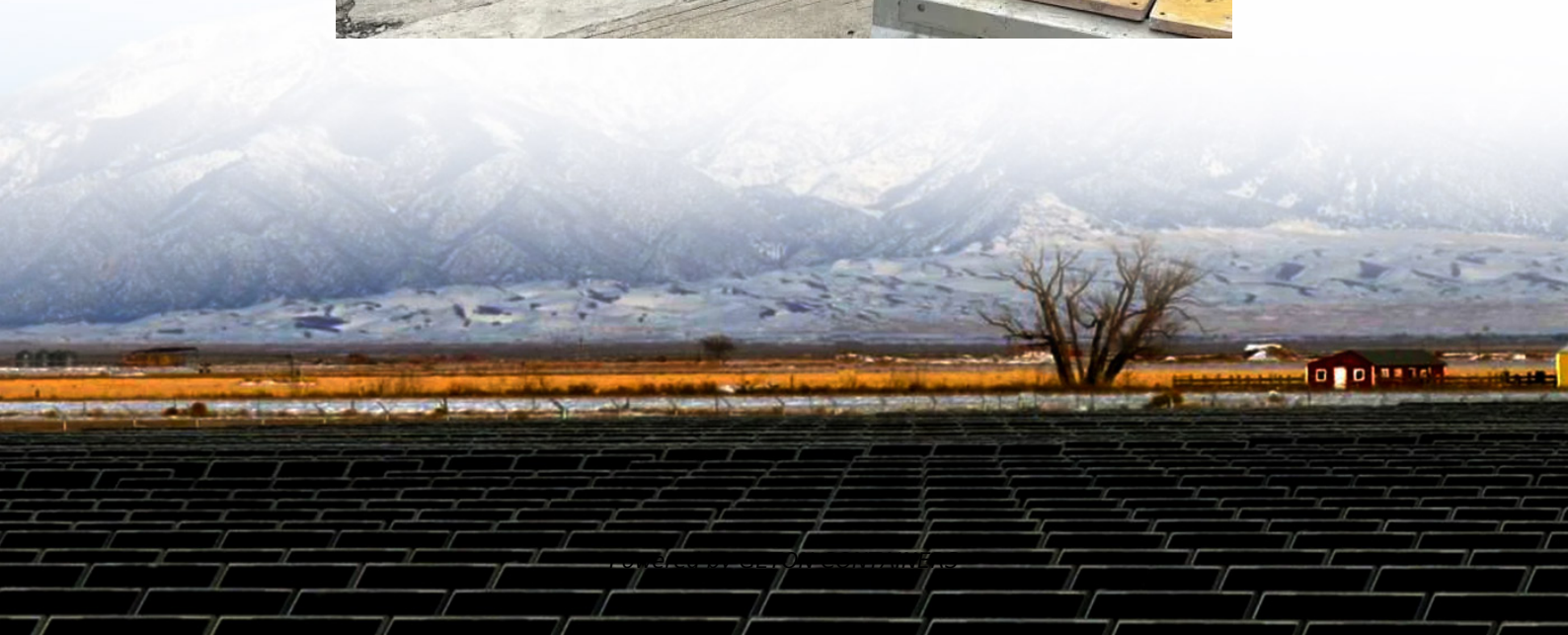


48v800w inverter





48v800w inverter



[Pure Sine Wave Phoenix Inverter VE.Direct](#)

The 800W Victron Energy Phoenix inverter converts 48V DC power into 230V AC power so you can run up to 800W of domestic appliances when off-grid.

[Free Quote](#)



[Kemapower off-Grid Pure Sine Wave Power Inverter 800W ...](#)

Kemapower off-Grid Pure Sine Wave Power Inverter 800W 8kw 8000W 12V 24V 48V MPPT Charger Controller Hybrid Solar Power Inverter, Find Details and Price about ...

[Free Quote](#)

[Victron Phoenix 48V Inverter - 800VA, VE.Direct, 120V AC](#)

Discover the Victron Phoenix 48V 800VA Inverter, designed for reliable 120V AC output and seamless integration with your power systems.

[Free Quote](#)



[Open Box Victron Phoenix 800VA 48V NON-GFCL](#)

Founded in 2003, Inverters R Us is one of the largest Victron suppliers in the world. We are known for our system designs, technical/pre & post sales support, massive inventory and ...

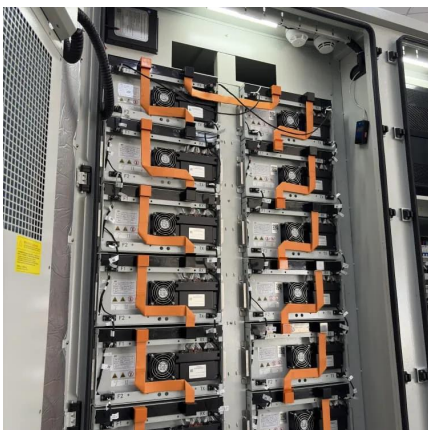
[Free Quote](#)



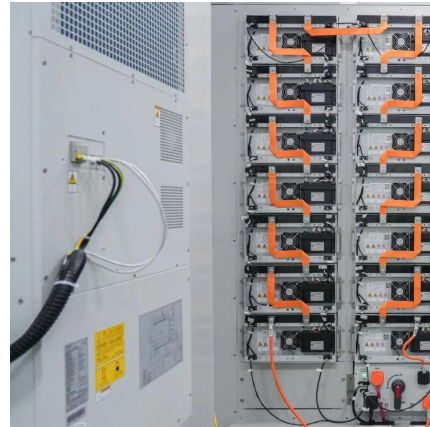
[800 Watt Modified Sine Wave Inverter,...](#)

The 800W modified sine wave inverter, converting 48VDC to 220VAC with an output power of 800W and a peak power of 1600W, this inverter efficiently ...

[Free Quote](#)



[Victron Energy 48/800 120V VE.Direct NEMA 5-15R Phoenix](#)



[800W Pure Sine Wave Inverter-48V DC to 110V 120V AC ...](#)

About this item pure sine wave inverter:Smooth and perfect sine waveform, just the same as home power/city power, Provide max 800 watt continuous power and 1600 watt ...

[Free Quote](#)



[Inverter Phoenix C Victron Full Sine Wav? 48V ...](#)

The design criteria have been to produce a true sine wave inverter with optimized efficiency but without compromise in performance. Employing hybrid HF technology, the result is a top quality product with compact ...

[Free Quote](#)



[Inverter](#)

Victron Energy Phoenix Inverter 48/800 120V VE.Direct NEMA 5-15R The Victron Energy Phoenix Inverter 48/800 120V VE.Direct NEMA 5-15R is a reliable and efficient inverter designed to ...

[Free Quote](#)



[Pure Sine Wave Phoenix Inverter VE.Direct](#)

The 800W Victron Energy Phoenix inverter converts 48V DC power into 230V AC power so you can run up to 800W of domestic appliances when off-grid.

[Free Quote](#)

[48V 800 Watt Pure Sine Wave Inverter , inverter](#)

A 48V 800 watt pure sine wave inverter is a device that converts direct current (DC) electricity from a 48 volt battery or solar system into alternating current (AC) electricity, providing a stable ...

[Free Quote](#)



[800 Watt Modified Sine Wave Inverter, 48VDC to 220VAC](#)

The 800W modified sine wave inverter, converting 48VDC to 220VAC with an output power of 800W and a peak power of 1600W, this inverter efficiently converts DC power from a 48V ...

[Free Quote](#)

[Inverter Phoenix C Victron Full Sine Wave? 48V 800VA](#)



The design criteria have been to produce a true sine wave inverter with optimized efficiency but without compromise in performance. Employing hybrid HF technology, the result is a top ...

[Free Quote](#)



Contact Us

For catalog requests, pricing, or partnerships, please visit:
<https://getonco.co.za>

Scan QR Code for More Information



<https://getonco.co.za>